

**Triton Bond Trust 2026-1 Series 1**

**Collateral Report**

OK

Model Period	3
Collection Period Start	1-May-26
Collection Period End	31-May-26
No. of Days	31
Interest Period Start	15-May-26
Interest Period End	14-Jun-26
No. of Days	31
Determination Date	11-Jun-26
Payment Date	15-Jun-26

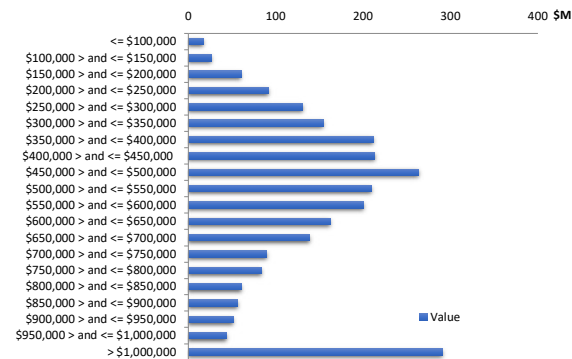


**TABLE 1: PORTFOLIO SUMMARY**

Description	Value
Pool Cut Date	31-May-26
Total Loan Pool Balance	2,559,651,812
Total Loan Pool Balance (Consolidated)	2,559,651,812
No. of Loans (Unconsolidated)	6,450
No. of Loans (Consolidated)	5,839
Average Loan Balance (Consolidated)	438,372
Maximum Loan Balance (consolidated)	2,368,499
Weighted Average Current LVR (%)	63.32%
Maximum Current LVR (%)	94.51%
Weighted Average Interest Rate	6.85%
Weighted Average Fixed Rate	6.23%
Weighted Average Variable Rate	6.86%
Weighted Average Seasoning (years)	2.17
Weighted Average Remaining Term (years)	27.30
Maximum Remaining Term (years)	29.67
Percentage of Fixed Rate Loans (%)	1.34%
Percentage of Interest Only Loans (%)	5.58%
Percentage of Line of Credit Loans (%)	0.00%
Percentage of Low Documentation Loans (%)	0.00%

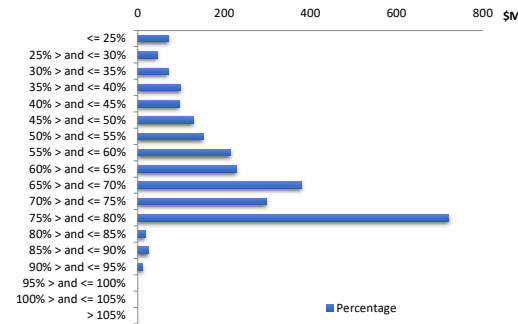
**TABLE 2: CURRENT LOAN BALANCE - (Consolidated)**

Value	Value (\$)	% by Value	Loans	% by Loans
<= \$100,000	17,489,718	0.68%	408	6.99%
\$100,000 > and <= \$150,000	26,863,592	1.04%	210	3.60%
\$150,000 > and <= \$200,000	60,400,918	2.36%	341	5.84%
\$200,000 > and <= \$250,000	91,751,958	3.58%	406	6.95%
\$250,000 > and <= \$300,000	130,985,344	5.12%	474	8.12%
\$300,000 > and <= \$350,000	154,935,763	6.05%	476	8.15%
\$350,000 > and <= \$400,000	211,374,486	8.26%	560	9.59%
\$400,000 > and <= \$450,000	213,802,893	8.35%	504	8.63%
\$450,000 > and <= \$500,000	263,513,806	10.29%	554	9.49%
\$500,000 > and <= \$550,000	209,583,766	8.19%	400	6.85%
\$550,000 > and <= \$600,000	200,456,450	7.83%	350	5.99%
\$600,000 > and <= \$650,000	162,868,272	6.36%	261	4.47%
\$650,000 > and <= \$700,000	138,589,034	5.41%	206	3.53%
\$700,000 > and <= \$750,000	89,914,601	3.51%	124	2.12%
\$750,000 > and <= \$800,000	83,818,399	3.27%	108	1.85%
\$800,000 > and <= \$850,000	60,871,896	2.38%	74	1.27%
\$850,000 > and <= \$900,000	56,737,450	2.22%	65	1.11%
\$900,000 > and <= \$950,000	51,530,595	2.01%	56	0.96%
\$950,000 > and <= \$1,000,000	43,914,145	1.72%	45	0.77%
> \$1,000,000	290,448,728	11.35%	217	3.72%
<b>Total</b>	<b>2,559,651,812</b>	<b>100.00%</b>	<b>5,839</b>	<b>100.00%</b>



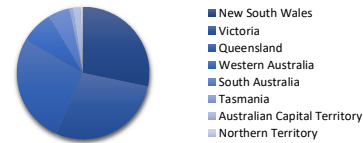
**TABLE 3: CURRENT LVR - (Consolidated)**

Percentage	Value (\$)	% by Value	Loans	% by Loans
<= 25%	71,879,045	2.81%	609	10.43%
25% > and <= 30%	45,820,895	1.79%	198	3.39%
30% > and <= 35%	70,434,670	2.75%	236	4.04%
35% > and <= 40%	99,740,202	3.90%	292	5.00%
40% > and <= 45%	95,941,921	3.75%	249	4.26%
45% > and <= 50%	129,198,063	5.05%	310	5.31%
50% > and <= 55%	150,921,016	5.90%	337	5.77%
55% > and <= 60%	214,703,337	8.39%	456	7.81%
60% > and <= 65%	229,278,341	8.96%	475	8.13%
65% > and <= 70%	380,111,368	14.85%	742	12.71%
70% > and <= 75%	298,368,900	11.66%	541	9.27%
75% > and <= 80%	719,875,509	28.12%	1306	22.37%
80% > and <= 85%	17,187,412	0.67%	34	0.58%
85% > and <= 90%	24,421,290	0.95%	37	0.63%
90% > and <= 95%	11,769,845	0.46%	17	0.29%
95% > and <= 100%	0	0.00%	0	0.00%
100% > and <= 105%	0	0.00%	0	0.00%
> 105%	0	0.00%	0	0.00%
<b>Total</b>	<b>2,559,651,812</b>	<b>100.00%</b>	<b>5,839</b>	<b>100.00%</b>



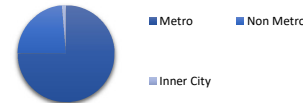
**TABLE 4: GEOGRAPHIC DISTRIBUTION - by primary security property**

State	Value (\$)	% by Value	Loans	% by Loans
New South Wales	722,874,566	28.24%	1,603	24.85%
Victoria	726,624,792	28.39%	1,902	29.49%
Queensland	685,893,684	26.80%	1,777	27.55%
Western Australia	204,786,093	8.00%	525	8.14%
South Australia	133,272,113	5.21%	381	5.91%
Tasmania	21,484,960	0.84%	85	1.32%
Australian Capital Territory	47,296,503	1.85%	132	2.05%
Northern Territory	17,419,101	0.68%	45	0.70%
<b>Total</b>	<b>2,559,651,812</b>	<b>100.00%</b>	<b>6,450</b>	<b>100.00%</b>



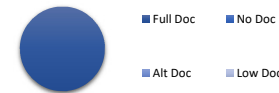
**TABLE 5: METRO VS. NON-METRO DISTRIBUTION - by primary security property**

Location	Value (\$)	% by Value	Loans	% by Loans
Metro	1,924,183,017	75.17%	4,685	72.64%
Non Metro	600,439,753	23.46%	1,671	25.91%
Inner City	35,029,042	1.37%	94	1.46%
<b>Total</b>	<b>2,559,651,812</b>	<b>100.00%</b>	<b>6,450</b>	<b>100.00%</b>



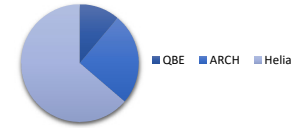
**TABLE 6: DOCUMENTATION TYPE**

Documentation	Value (\$)	% by Value	Loans	% by Loans
Full Doc	2,559,651,812.33	100.00%	6,450	100.00%
No Doc	0.00	0.00%	0	0.00%
Alt Doc	0.00	0.00%	0	0.00%
Low Doc	0.00	0.00%	0	0.00%
<b>Total</b>	<b>2,559,651,812</b>	<b>100.00%</b>	<b>6,450</b>	<b>100.00%</b>



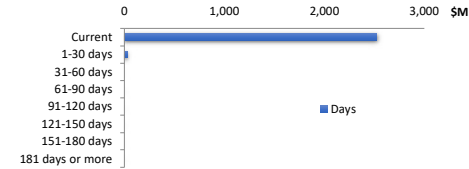
**TABLE 7: MORTGAGE INSURER**

LMI Provider	Value (\$)	% by Value	Loans	% by Loans
QBE	25,002,765	0.98%	264	4.09%
ARCH	57,104,224	2.23%	91	1.41%
Helia	144,134,585	5.63%	567	8.79%
No Data	2,333,410,238	91.16%	5,528	85.71%
<b>Total</b>	<b>2,559,651,812</b>	<b>100.00%</b>	<b>6,450</b>	<b>100.00%</b>



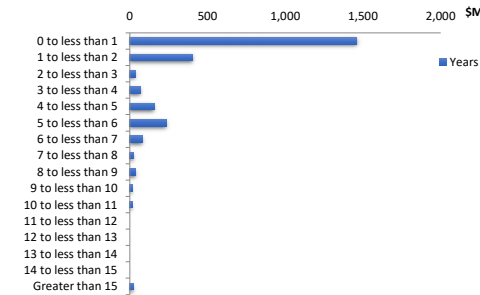
**TABLE 8: ARREARS**

Days	Value (\$)	% by Value	Loans	% by Loans
Current	2,526,993,789	98.72%	6,378	98.88%
1-30 days	32,294,178	1.26%	70	1.09%
31-60 days	363,846	0.01%	2	0.03%
61-90 days	0	0.00%	0	0.00%
91-120 days	0	0.00%	0	0.00%
121-150 days	0	0.00%	0	0.00%
151-180 days	0	0.00%	0	0.00%
181 days or more	0	0.00%	0	0.00%
<b>Total</b>	<b>2,559,651,812</b>	<b>100.00%</b>	<b>6,450</b>	<b>100.00%</b>



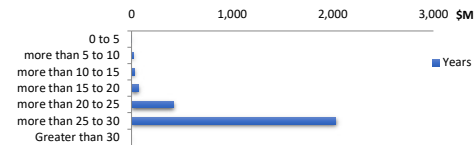
**TABLE 9: SEASONING**

Years	Value (\$)	% by Value	Loans	% by Loans
0 to less than 1	1,456,987,673	56.92%	2,941	45.60%
1 to less than 2	405,044,410	15.82%	863	13.38%
2 to less than 3	35,904,203	1.40%	82	1.27%
3 to less than 4	70,267,660	2.75%	181	2.81%
4 to less than 5	156,885,903	6.13%	423	6.56%
5 to less than 6	236,325,886	9.23%	904	14.02%
6 to less than 7	82,640,264	3.23%	312	4.84%
7 to less than 8	24,158,499	0.94%	104	1.61%
8 to less than 9	38,806,457	1.52%	179	2.78%
9 to less than 10	14,615,257	0.57%	79	1.22%
10 to less than 11	14,470,423	0.57%	81	1.26%
11 to less than 12	0	0.00%	0	0.00%
12 to less than 13	0	0.00%	0	0.00%
13 to less than 14	180,779	0.01%	1	0.02%
14 to less than 15	0	0.00%	0	0.00%
Greater than 15	23,364,397	0.91%	300	4.65%
<b>Total</b>	<b>2,559,651,812</b>	<b>100.00%</b>	<b>6,450</b>	<b>100.00%</b>



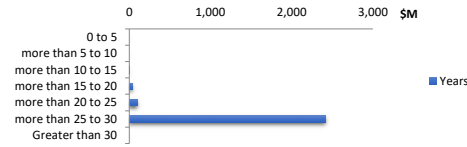
**TABLE 10: REMAINING TERM**

Years	Value (\$)	% by Value	Loans	% by Loans
0 to 5	2,461,835	0.10%	70	1.09%
more than 5 to 10	15,047,192	0.59%	194	3.01%
more than 10 to 15	27,608,188	1.08%	160	2.48%
more than 15 to 20	67,082,204	2.62%	286	4.43%
more than 20 to 25	418,198,057	16.34%	1,545	23.95%
more than 25 to 30	2,029,254,336	79.28%	4,195	65.04%
Greater than 30	0	0.00%	0	0.00%
<b>Total</b>	<b>2,559,651,812</b>	<b>100.00%</b>	<b>6,450</b>	<b>100.00%</b>



**TABLE 11: ORIGINAL TERM**

Years	Value (\$)	% by Value	Loans	% by Loans
0 to 5	0	0.00%	0	0.00%
more than 5 to 10	1,025,309	0.04%	9	0.14%
more than 10 to 15	4,972,559	0.19%	32	0.50%
more than 15 to 20	41,180,934	1.61%	182	2.82%
more than 20 to 25	101,939,383	3.98%	351	5.44%
more than 25 to 30	2,410,533,628	94.17%	5,876	91.10%
Greater than 30	0	0.00%	0	0.00%
<b>Total</b>	<b>2,559,651,812</b>	<b>100.00%</b>	<b>6,450</b>	<b>100.00%</b>



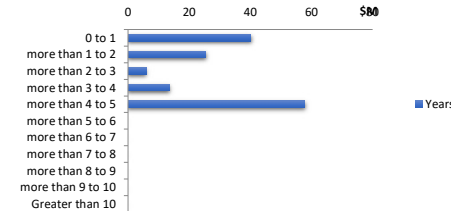
**TABLE 12: LOAN TYPE**

Value (\$)	% by Value	Loans	% by Loans	
Principal & Interest	2,416,722,227	94.42%	6,080	94.26%
Interest Only (excl. LOC)	142,929,585	5.58%	370	5.74%
Line of Credit	0	0.00%	0	0.00%
<b>Total</b>	<b>2,559,651,812</b>	<b>100.00%</b>	<b>6,450</b>	<b>100.00%</b>



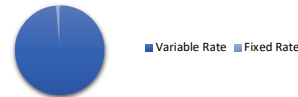
**TABLE 13: INTEREST ONLY REMAINING TERM**

Years	Value (\$)	% by Value	Loans	% by Loans
0 to 1	40,182,358	1.57%	101	27.30%
more than 1 to 2	25,479,073	1.00%	67	18.11%
more than 2 to 3	5,993,702	0.23%	15	4.05%
more than 3 to 4	13,620,736	0.53%	33	8.92%
more than 4 to 5	57,653,717	2.25%	154	41.62%
more than 5 to 6	0	0.00%	0	0.00%
more than 6 to 7	0	0.00%	0	0.00%
more than 7 to 8	0	0.00%	0	0.00%
more than 8 to 9	0	0.00%	0	0.00%
more than 9 to 10	0	0.00%	0	0.00%
Greater than 10	0	0.00%	0	0.00%
<b>Total</b>	<b>142,929,585</b>	<b>5.58%</b>	<b>370</b>	<b>100.00%</b>



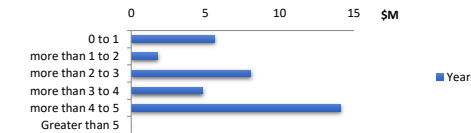
**TABLE 14: REPAYMENT TYPE**

Value (\$)	% by Value	Loans	% by Loans	
Variable Rate	2,525,239,093	98.66%	6,373	98.81%
Fixed Rate	34,412,719	1.34%	77	1.19%
<b>Total</b>	<b>2,559,651,812</b>	<b>100.00%</b>	<b>6,450</b>	<b>100.00%</b>



**TABLE 15: FIXED RATE REMAINING TERM**

Years	Value (\$)	% by Value	Loans	% by Loans
0 to 1	5,621,508	0.22%	12	0.19%
more than 1 to 2	1,794,760	0.07%	6	0.09%
more than 2 to 3	8,049,892	0.31%	19	0.29%
more than 3 to 4	4,816,565	0.19%	10	0.16%
more than 4 to 5	14,129,993	0.55%	29	0.45%
Greater than 5	0	0.00%	1	0.02%
<b>Total</b>	<b>34,412,719</b>	<b>1.34%</b>	<b>77</b>	<b>1.19%</b>



**TABLE 16: BORROWER TYPE**

	Value (\$)	% by Value	Loans	% by Loans
Individual	1,435,028,704	56.06%	3,183	54.51%
Company	1,124,623,109	43.94%	2,656	45.49%
<b>Total</b>	<b>2,559,651,812</b>	<b>100.00%</b>	<b>5,839</b>	<b>100.00%</b>



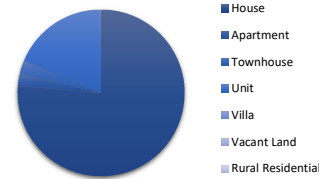
**TABLE 17: OCCUPANCY TYPE**

	Value (\$)	% by Value	Loans	% by Loans
Owner Occupied	1,014,662,555	39.64%	2,651	41.10%
Investment	1,544,989,257	60.36%	3,799	58.90%
<b>Total</b>	<b>2,559,651,812</b>	<b>100.00%</b>	<b>6,450</b>	<b>100.00%</b>



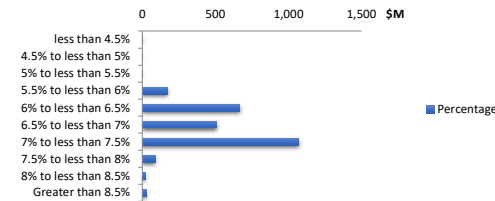
**TABLE 18: PROPERTY TYPE**

	Value (\$)	% by Value	Loans	% by Loans
House	1,954,024,743	76.34%	4,214	72.17%
Apartment	61,492,898	2.40%	197	3.37%
Townhouse	66,081,328	2.58%	188	3.22%
Unit	474,853,844	18.55%	1,227	21.01%
Villa	1,828,326	0.07%	7	0.12%
Vacant Land	0	0.00%	0	0.00%
Rural Residential	1,370,673	0.05%	6	0.10%
<b>Total</b>	<b>2,559,651,812</b>	<b>100.00%</b>	<b>5,839</b>	<b>100.00%</b>



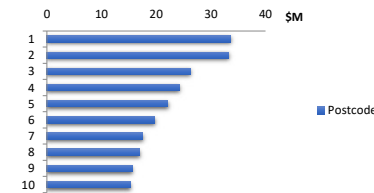
**TABLE 19: INTEREST RATE DISTRIBUTION**

Percentage	Value (\$)	% by Value	Loans	% by Loans
less than 4.5%	4,376,748	0.17%	11	0.17%
4.5% to less than 5%	1,165,462	0.05%	3	0.05%
5% to less than 5.5%	3,207,556	0.13%	11	0.17%
5.5% to less than 6%	171,704,301	6.71%	553	8.57%
6% to less than 6.5%	665,996,264	26.02%	1,523	23.61%
6.5% to less than 7%	507,984,428	19.85%	1,294	20.06%
7% to less than 7.5%	1,070,500,771	41.82%	2,497	38.71%
7.5% to less than 8%	87,201,796	3.41%	259	4.02%
8% to less than 8.5%	19,419,943	0.76%	105	1.63%
Greater than 8.5%	28,094,543	1.10%	194	3.01%
<b>Total</b>	<b>2,559,651,812</b>	<b>100.00%</b>	<b>6,450</b>	<b>100.00%</b>



**TABLE 20: TOP 10 POST CODES - by value**

Postcode	Value (\$)	% by Value	Loans	% by Loans
3064	33,534,943	1.31%	79	1.22%
3029	33,157,576	1.30%	85	1.32%
4209	26,232,875	1.02%	54	0.84%
3977	24,314,620	0.95%	49	0.76%
4207	22,141,557	0.87%	49	0.76%
4125	19,728,297	0.77%	52	0.81%
3338	17,574,038	0.69%	45	0.70%
3030	16,984,729	0.66%	41	0.64%
3024	15,625,450	0.61%	39	0.60%
2560	15,300,867	0.60%	32	0.50%
<b>Total</b>	<b>224,594,953</b>	<b>8.77%</b>	<b>525</b>	<b>8.14%</b>



**TABLE 22: Hardship**

Hardship Type	Value (\$)	% by Value	Loans	% by Loans
COVID-19	-	0.00%	0	0.00%
Standard	3,078,577.06	0.12%	9	0.14%
Non-Hardship	2,556,573,235.27	99.88%	6,441	99.86%
<b>Total</b>	<b>2,559,651,812</b>	<b>100.00%</b>	<b>6,450</b>	<b>100.00%</b>

