

Triton Bond Trust 2025-4 Series 1

Collateral Report

OK

Model Period	6
Collection Period Start	1-May-26
Collection Period End	31-May-26
No. of Days	31
Interest Period Start	13-May-26
Interest Period End	14-Jun-26
No. of Days	33
Determination Date	11-Jun-26
Payment Date	15-Jun-26



TABLE 1: PORTFOLIO SUMMARY

Description	Value
Pool Cut Date	31-May-26
Total Loan Pool Balance	1,080,745,208.44
No. of Loans (Unconsolidated)	2,674
No. of Loans (Consolidated)	2,570
Average Loan Balance (Consolidated)	420,523
Maximum Loan Balance (consolidated)	2,397,966
Weighted Average Current LVR (%)	62.66%
Maximum Current LVR (%)	94.97%
Weighted Average Interest Rate	7.15%
Weighted Average Fixed Rate	6.55%
Weighted Average Variable Rate	7.16%
Weighted Average Seasoning (years)	2.26
Weighted Average Remaining Term (years)	26.03
Maximum Remaining Term (years)	29.42
Percentage of Fixed Rate Loans (%)	1.58%
Percentage of Interest Only Loans (%)	5.88%
Percentage of Line of Credit Loans (%)	0.00%
Percentage of Low Documentation Loans (%)	0.00%

TABLE 2: CURRENT LOAN BALANCE - (Consolidated)

Value	Value (\$)	% by Value	Loans	% by Loans
<= \$100,000	4,360,877	0.40%	105	4.09%
\$100,000 > and <= \$150,000	16,015,300	1.48%	127	4.94%
\$150,000 > and <= \$200,000	28,016,113	2.59%	158	6.15%
\$200,000 > and <= \$250,000	51,563,242	4.77%	228	8.87%
\$250,000 > and <= \$300,000	74,319,364	6.88%	269	10.47%
\$300,000 > and <= \$350,000	81,394,614	7.53%	249	9.69%
\$350,000 > and <= \$400,000	97,190,487	8.99%	260	10.12%
\$400,000 > and <= \$450,000	88,602,797	8.20%	209	8.13%
\$450,000 > and <= \$500,000	89,435,764	8.28%	188	7.32%
\$500,000 > and <= \$550,000	87,877,916	8.13%	168	6.54%
\$550,000 > and <= \$600,000	70,070,731	6.48%	122	4.75%
\$600,000 > and <= \$650,000	69,770,522	6.46%	112	4.36%
\$650,000 > and <= \$700,000	57,203,281	5.29%	85	3.31%
\$700,000 > and <= \$750,000	53,619,620	4.96%	74	2.88%
\$750,000 > and <= \$800,000	39,377,789	3.64%	51	1.98%
\$800,000 > and <= \$850,000	32,184,571	2.98%	39	1.52%
\$850,000 > and <= \$900,000	22,720,105	2.10%	26	1.01%
\$900,000 > and <= \$950,000	17,539,111	1.62%	19	0.74%
\$950,000 > and <= \$1,000,000	14,672,715	1.36%	15	0.58%
> \$1,000,000	84,810,290	7.85%	66	2.57%
Total	1,080,745,208	100.00%	2,570	100.00%

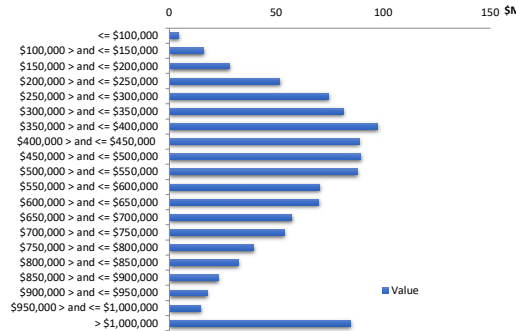


TABLE 3: CURRENT LVR - (Consolidated)

Percentage	Value (\$)	% by Value	Loans	% by Loans
<= 25%	22,415,567	2.07%	191	7.43%
25% > and <= 30%	20,125,099	1.86%	80	3.11%
30% > and <= 35%	22,001,777	2.04%	85	3.31%
35% > and <= 40%	36,256,650	3.35%	127	4.94%
40% > and <= 45%	48,897,161	4.52%	151	5.88%
45% > and <= 50%	67,712,553	6.27%	189	7.35%
50% > and <= 55%	90,826,836	8.40%	223	8.68%
55% > and <= 60%	94,422,609	8.74%	246	9.57%
60% > and <= 65%	116,944,331	10.82%	249	9.69%
65% > and <= 70%	160,757,231	14.87%	325	12.65%
70% > and <= 75%	120,508,159	11.15%	224	8.72%
75% > and <= 80%	237,251,544	21.95%	418	16.26%
80% > and <= 85%	18,156,527	1.68%	27	1.05%
85% > and <= 90%	19,954,619	1.85%	28	1.09%
90% > and <= 95%	4,514,545	0.42%	7	0.27%
95% > and <= 100%	0	0.00%	0	0.00%
100% > and <= 105%	0	0.00%	0	0.00%
> 105%	0	0.00%	0	0.00%
Total	1,080,745,208	100.00%	2,570	100.00%

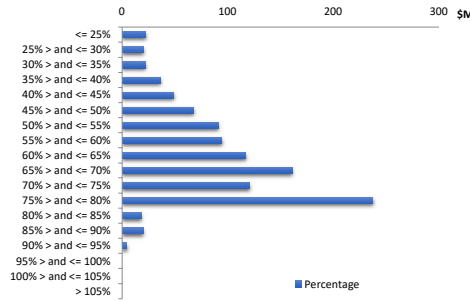


TABLE 4: GEOGRAPHIC DISTRIBUTION - by primary security property

State	Value (\$)	% by Value	Loans	% by Loans
New South Wales	245,120,797	22.68%	508	19.00%
Victoria	261,828,265	24.23%	626	23.41%
Queensland	299,946,227	27.75%	854	31.94%
Western Australia	134,111,349	12.41%	332	12.42%
South Australia	69,250,078	6.41%	196	7.33%
Tasmania	26,752,357	2.48%	56	2.09%
Australian Capital Territory	23,079,900	2.14%	63	2.36%
Northern Territory	20,656,236	1.91%	39	1.46%
Total	1,080,745,208	100.00%	2,674	100.00%

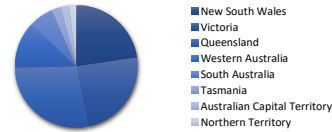


TABLE 5: METRO VS. NON-METRO DISTRIBUTION - by primary security property

Location	Value (\$)	% by Value	Loans	% by Loans
Metro	927,405,157	85.81%	2,264	84.67%
Non Metro	141,638,804	13.11%	381	14.25%
Inner City	11,701,247	1.08%	29	1.08%
Total	1,080,745,208	100.00%	2,674	100.00%

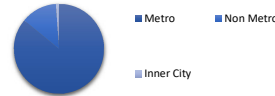


TABLE 6: DOCUMENTATION TYPE

Documentation	Value (\$)	% by Value	Loans	% by Loans
Full Doc	1,080,745,208.44	100.00%	2,674	100.00%
No Doc	0.00	0.00%	0	0.00%
Alt Doc	0.00	0.00%	0	0.00%
Low Doc	0.00	0.00%	0	0.00%
Total	1,080,745,208	100.00%	2,674	100.00%



TABLE 7: MORTGAGE INSURER

LMI Provider	Value (\$)	% by Value	Loans	% by Loans
QBE	584,948	0.05%	2	0.07%
ARCH	32,837,698	3.04%	50	1.87%
Helia	4,395,486	0.41%	13	0.49%
No Data	1,042,927,078	96.50%	2,609	97.57%
Total	1,080,745,208	100.00%	2,674	100.00%

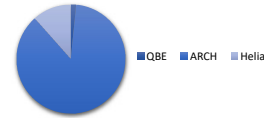


TABLE 8: ARREARS

Days	Value (\$)	% by Value	Loans	% by Loans
Current	1,059,542,008	98.04%	2,642	98.80%
1-30 days	19,755,843	1.83%	29	1.08%
31-60 days	0	0.00%	0	0.00%
61-90 days	598,573	0.06%	1	0.04%
91-120 days	848,785	0.08%	2	0.07%
121-150 days	0	0.00%	0	0.00%
151-180 days	0	0.00%	0	0.00%
181 days or more	0	0.00%	0	0.00%
Total	1,080,745,208	100.00%	2,674	100.00%

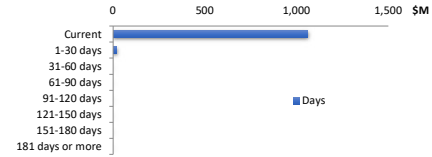


TABLE 9: SEASONING

Years	Value (\$)	% by Value	Loans	% by Loans
0 to less than 1	289,087,130	26.75%	609	22.77%
1 to less than 2	293,938,980	27.20%	607	22.70%
2 to less than 3	131,731,833	12.19%	242	9.05%
3 to less than 4	218,720,432	20.24%	665	24.87%
4 to less than 5	127,132,731	11.76%	434	16.23%
5 to less than 6	2,805,374	0.26%	9	0.34%
6 to less than 7	1,971,806	0.18%	11	0.41%
7 to less than 8	685,890	0.06%	2	0.07%
8 to less than 9	13,798,046	1.28%	88	3.29%
9 to less than 10	(1,472)	0.00%	1	0.04%
10 to less than 11	602,817	0.06%	3	0.11%
11 to less than 12	0	0.00%	0	0.00%
12 to less than 13	0	0.00%	0	0.00%
13 to less than 14	0	0.00%	0	0.00%
14 to less than 15	0	0.00%	0	0.00%
Greater than 15	271,642	0.03%	3	0.11%
Total	1,080,745,208	100.00%	2,674	100.00%

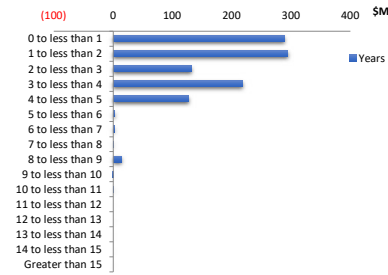


TABLE 10: REMAINING TERM

Years	Value (\$)	% by Value	Loans	% by Loans
0 to 5	249,682	0.02%	4	0.15%
more than 5 to 10	1,240,621	0.11%	12	0.45%
more than 10 to 15	6,534,428	0.60%	28	1.05%
more than 15 to 20	26,004,357	2.41%	98	3.66%
more than 20 to 25	301,498,730	27.90%	652	24.38%
more than 25 to 30	745,217,390	68.95%	1,880	70.31%
Greater than 30	0	0.00%	0	0.00%
Total	1,080,745,208	100.00%	2,674	100.00%

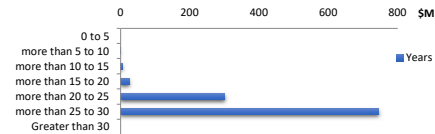


TABLE 11: ORIGINAL TERM

Years	Value (\$)	% by Value	Loans	% by Loans
0 to 5	0	0.00%	0	0.00%
more than 5 to 10	255,787	0.02%	3	0.11%
more than 10 to 15	4,980,210	0.46%	19	0.71%
more than 15 to 20	18,847,910	1.74%	68	2.54%
more than 20 to 25	279,648,087	25.88%	542	20.27%
more than 25 to 30	777,013,216	71.90%	2,042	76.36%
Greater than 30	0	0.00%	0	0.00%
Total	1,080,745,208	100.00%	2,674	100.00%

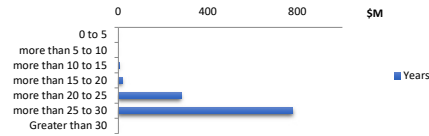


TABLE 12: LOAN TYPE

	Value (\$)	% by Value	Loans	% by Loans
Principal & Interest	1,017,220,309	94.12%	2,537	94.88%
Interest Only (excl. LOC)	63,524,899	5.88%	137	5.12%
Line of Credit	0	0.00%	0	0.00%
Total	1,080,745,208	100.00%	2,674	100.00%



TABLE 13: INTEREST ONLY REMAINING TERM

Years	Value (\$)	% by Value	Loans	% by Loans
0 to 1	22,362,318	2.07%	47	34.31%
more than 1 to 2	14,167,460	1.31%	32	23.36%
more than 2 to 3	4,301,792	0.40%	8	5.84%
more than 3 to 4	4,525,977	0.42%	9	6.57%
more than 4 to 5	18,167,352	1.68%	41	29.93%
more than 5 to 6	0	0.00%	0	0.00%
more than 6 to 7	0	0.00%	0	0.00%
more than 7 to 8	0	0.00%	0	0.00%
more than 8 to 9	0	0.00%	0	0.00%
more than 9 to 10	0	0.00%	0	0.00%
Greater than 10	0	0.00%	0	0.00%
Total	63,524,899	5.88%	137	100.00%

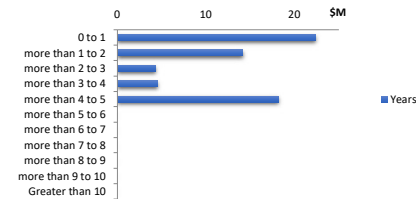


TABLE 14: REPAYMENT TYPE

	Value (\$)	% by Value	Loans	% by Loans
Variable Rate	1,063,680,406	98.42%	2,645	98.92%
Fixed Rate	17,064,802	1.58%	29	1.08%
Total	1,080,745,208	100.00%	2,674	100.00%

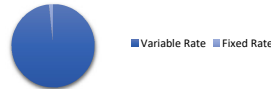


TABLE 15: FIXED RATE REMAINING TERM

Years	Value (\$)	% by Value	Loans	% by Loans
0 to 1	458,899	0.04%	2	0.07%
more than 1 to 2	0	0.00%	0	0.00%
more than 2 to 3	11,548,678	1.07%	21	0.79%
more than 3 to 4	1,157,253	0.11%	2	0.07%
more than 4 to 5	3,899,972	0.36%	4	0.15%
Greater than 5	0	0.00%	0	0.00%
Total	17,064,802	1.58%	29	1.08%

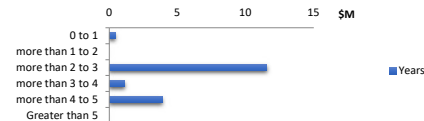


TABLE 16: BORROWER TYPE

	Value (\$)	% by Value	Loans	% by Loans
Individual	311,099,337	28.79%	551	21.44%
Company	769,645,871	71.21%	2,019	78.56%
Total	1,080,745,208	100.00%	2,570	100.00%



TABLE 17: OCCUPANCY TYPE

	Value (\$)	% by Value	Loans	% by Loans
Owner Occupied	128,012,055	11.84%	224	8.38%
Investment	952,733,153	88.16%	2,450	91.62%
Total	1,080,745,208	100.00%	2,674	100.00%



TABLE 18: PROPERTY TYPE

	Value (\$)	% by Value	Loans	% by Loans
House	789,444,731	73.05%	1,675	65.18%
Apartment	35,895,862	3.32%	106	4.12%
Townhouse	43,679,080	4.04%	157	6.11%
Unit	211,725,535	19.59%	632	24.59%
Villa	0	0.00%	0	0.00%
Vacant Land	0	0.00%	0	0.00%
Commercial - Residential	0	0.00%	0	0.00%
Rural Residential	0	0.00%	0	0.00%
Total	1,080,745,208	100.00%	2,570	100.00%

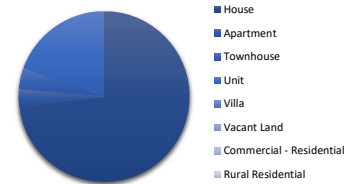


TABLE 19: INTEREST RATE DISTRIBUTION

Percentage	Value (\$)	% by Value	Loans	% by Loans
less than 4.5%	0	0.00%	0	0.00%
4.5% to less than 5%	229,400	0.02%	1	0.04%
5% to less than 5.5%	1,626,025	0.15%	2	0.07%
5.5% to less than 6%	18,869,794	1.75%	30	1.12%
6% to less than 6.5%	127,131,520	11.76%	226	8.45%
6.5% to less than 7%	157,542,796	14.58%	341	12.75%
7% to less than 7.5%	600,842,276	55.60%	1,551	58.00%
7.5% to less than 8%	129,511,928	11.98%	377	14.10%
8% to less than 8.5%	35,514,966	3.29%	102	3.81%
Greater than 8.5%	9,476,504	0.88%	44	1.65%
Total	1,080,745,208	100.00%	2,674	100.00%

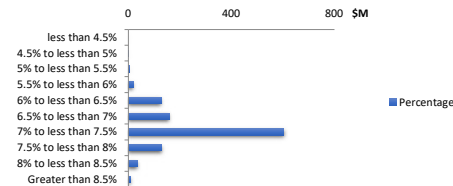


TABLE 20: TOP 10 POST CODES - by value

Postcode	Value (\$)	% by Value	Loans	% by Loans
3064	13,047,192	1.21%	31	1.16%
6171	12,935,050	1.20%	28	1.05%
3029	12,286,435	1.14%	24	0.90%
4503	11,769,924	1.09%	36	1.35%
3024	11,598,579	1.07%	27	1.01%
4207	11,309,554	1.05%	28	1.05%
3977	10,779,905	1.00%	20	0.75%
4209	10,344,362	0.96%	28	1.05%
3338	10,261,950	0.95%	22	0.82%
3978	10,018,298	0.93%	24	0.90%
Total	114,351,251	10.58%	268	10.02%

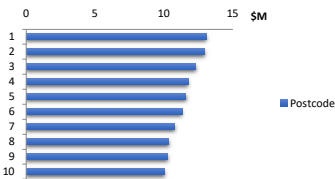


TABLE 21: Hardship

Hardship Type	Value (\$)	% by Value	Loans	% by Loans
COVID-19	-	0.00%	0	0.00%
Standard	1,834,361.55	0.17%	3	0.11%
Non-Hardship	1,078,910,846.89	99.83%	2,671	99.89%
Total	1,080,745,208	100.00%	2,674	100.00%

