

Triton Bond Trust 2024-3
Collateral Report
OK

Model Period	17
Collection Period Start	1-May-26
Collection Period End	31-May-26
No. of Days	31
Interest Period Start	13-May-26
Interest Period End	14-Jun-26
No. of Days	33
Determination Date	11-Jun-26
Payment Date	15-Jun-26



TABLE 1: PORTFOLIO SUMMARY

Description	Value
Pool Cut Date	31-May-26
Total Loan Pool Balance	837,150,570
No. of Loans (Unconsolidated)	2,608
No. of Loans (Consolidated)	2,426
Average Loan Balance (Consolidated)	345,074
Maximum Loan Balance (consolidated)	2,359,989
Weighted Average Current LVR (%)	60.79%
Maximum Current LVR (%)	96.57%
Weighted Average Interest Rate	7.11%
Weighted Average Fixed Rate	7.06%
Weighted Average Variable Rate	7.11%
Weighted Average Seasoning (years)	3.48
Weighted Average Remaining Term (years)	25.73
Maximum Remaining Term (years)	28.42
Percentage of Fixed Rate Loans (%)	2.62%
Percentage of Interest Only Loans (%)	8.63%
Percentage of Line of Credit Loans (%)	0.00%
Percentage of Low Documentation Loans (%)	0.00%

TABLE 2: CURRENT LOAN BALANCE - (Consolidated)

Value	Value (\$)	% by Value	Loans	% by Loans
<= \$100,000	7,595,034	0.91%	198	7.67%
\$100,000 > and <= \$150,000	28,467,086	3.40%	224	9.23%
\$150,000 > and <= \$200,000	54,883,448	6.56%	313	12.90%
\$200,000 > and <= \$250,000	60,306,821	7.20%	288	11.05%
\$250,000 > and <= \$300,000	77,153,200	9.22%	280	11.54%
\$300,000 > and <= \$350,000	77,420,176	9.25%	236	9.81%
\$350,000 > and <= \$400,000	62,649,580	7.48%	168	6.92%
\$400,000 > and <= \$450,000	68,892,786	8.23%	163	6.72%
\$450,000 > and <= \$500,000	57,283,900	6.84%	121	4.99%
\$500,000 > and <= \$550,000	49,850,592	5.95%	95	3.92%
\$550,000 > and <= \$600,000	46,988,840	5.61%	82	3.38%
\$600,000 > and <= \$650,000	32,990,489	3.94%	53	2.18%
\$650,000 > and <= \$700,000	29,094,351	3.48%	43	1.77%
\$700,000 > and <= \$750,000	24,526,673	2.93%	34	1.40%
\$750,000 > and <= \$800,000	21,747,024	2.60%	28	1.15%
\$800,000 > and <= \$850,000	17,353,878	2.07%	21	0.87%
\$850,000 > and <= \$900,000	14,820,691	1.77%	17	0.70%
\$900,000 > and <= \$950,000	20,328,301	2.43%	22	0.91%
\$950,000 > and <= \$1,000,000	14,641,568	1.75%	15	0.62%
> \$1,000,000	70,156,334	8.38%	55	2.27%
Total	837,150,570	100.00%	2,426	100.00%

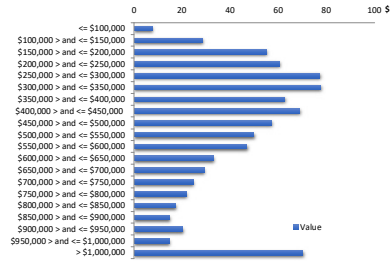


TABLE 3: CURRENT LVR - (Consolidated)

Percentage	Value (\$)	% by Value	Loans	% by Loans
<= 25%	24,028,959	2.87%	276	11.38%
25% > and <= 30%	22,189,281	2.65%	106	4.37%
30% > and <= 35%	28,156,505	3.36%	123	5.07%
35% > and <= 40%	32,222,369	3.85%	136	5.61%
40% > and <= 45%	46,616,529	5.57%	173	7.13%
45% > and <= 50%	57,580,295	6.88%	213	8.78%
50% > and <= 55%	71,668,170	8.56%	235	9.69%
55% > and <= 60%	76,522,851	9.14%	228	9.40%
60% > and <= 65%	80,069,852	9.56%	206	8.49%
65% > and <= 70%	103,602,590	12.38%	212	8.74%
70% > and <= 75%	77,140,337	9.21%	141	5.81%
75% > and <= 80%	165,170,809	19.73%	293	12.08%
80% > and <= 85%	30,809,424	3.68%	52	2.14%
85% > and <= 90%	16,403,524	1.96%	24	0.99%
90% > and <= 95%	3,674,303	0.44%	6	0.25%
95% > and <= 100%	1,294,972	0.15%	2	0.08%
100% > and <= 105%	0	0.00%	0	0.00%
> 105%	0	0.00%	0	0.00%
Total	837,150,570	100.00%	2,426	100.00%

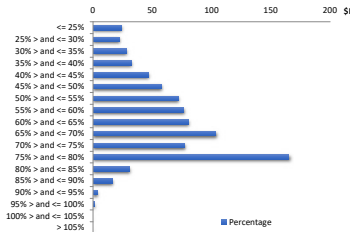


TABLE 4: GEOGRAPHIC DISTRIBUTION - by primary security property

State	Value (\$)	% by Value	Loans	% by Loans
New South Wales	230,005,430	27.47%	524	20.09%
Victoria	248,027,905	29.63%	783	30.02%
Queensland	240,550,846	28.73%	886	33.97%
Western Australia	51,435,070	6.14%	163	6.25%
South Australia	38,729,990	4.63%	134	5.14%
Tasmania	15,406,534	1.84%	88	3.37%
Australian Capital Territory	11,315,519	1.35%	26	1.00%
Northern Territory	1,679,278	0.20%	4	0.15%
Total	837,150,570	100.00%	2,608	100.00%

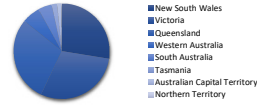


TABLE 5: METRO VS. NON-METRO DISTRIBUTION - by primary security property

Location	Value (\$)	% by Value	Loans	% by Loans
Metro	732,347,634	87.48%	2,223	85.24%
Non Metro	76,706,896	9.16%	296	11.35%
Inner City	28,096,040	3.36%	89	3.41%
Total	837,150,570	100.00%	2,608	100.00%

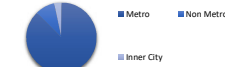


TABLE 6: DOCUMENTATION TYPE

Documentation	Value (\$)	% by Value	Loans	% by Loans
Full Doc	837,150,570.44	100.00%	2,608	100.00%
No Doc	0.00	0.00%	0	0.00%
Alt Doc	0.00	0.00%	0	0.00%
Low Doc	0.00	0.00%	0	0.00%
Total	837,150,570	100.00%	2,608	100.00%

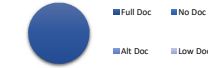


TABLE 7: MORTGAGE INSURER

LMI Provider	Value (\$)	% by Value	Loans	% by Loans
QBE	981,694	0.12%	3	0.12%
ARCH	57,015,156	6.81%	101	3.87%
Helia	36,365,402	4.34%	122	4.68%
No Data	742,788,319	88.73%	2,382	91.33%
Total	837,150,570	100.00%	2,608	100.00%



TABLE 8: ARREARS

Days	Value (\$)	% by Value	Loans	% by Loans
Current	813,972,586	97.23%	2,561	98.20%
1-30 days	20,303,875	2.43%	41	1.57%
31-60 days	1,409,666	0.17%	3	0.12%
61-90 days	601,567	0.07%	2	0.08%
91-120 days	862,875	0.10%	1	0.04%
121-150 days	0	0.00%	0	0.00%
151-180 days	0	0.00%	0	0.00%
181 days or more	0	0.00%	0	0.00%
Total	837,150,570	100.00%	2,608	100.00%

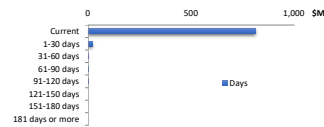


TABLE 9: SEASONING

Years	Value (\$)	% by Value	Loans	% by Loans
0 to less than 1	0	0.00%	0	0.00%
1 to less than 2	165,886,128	19.81%	402	15.41%
2 to less than 3	366,988,257	43.84%	1,059	40.61%
3 to less than 4	99,560,180	11.89%	260	9.97%
4 to less than 5	23,243,521	2.78%	62	2.38%
5 to less than 6	14,886,256	1.78%	43	1.65%
6 to less than 7	68,995,079	8.24%	324	12.42%
7 to less than 8	77,915,742	9.31%	364	13.96%
8 to less than 9	16,745,348	2.00%	80	3.07%
9 to less than 10	994,474	0.12%	3	0.12%
10 to less than 11	282,744	0.03%	3	0.12%
11 to less than 12	180,391	0.02%	2	0.08%
12 to less than 13	0	0.00%	0	0.00%
13 to less than 14	0	0.00%	0	0.00%
14 to less than 15	0	0.00%	0	0.00%
Greater than 15	1,492,450	0.18%	6	0.23%
Total	837,150,570	100.00%	2,608	100.00%

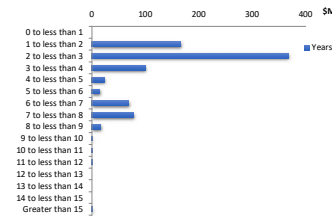


TABLE 10: REMAINING TERM

Years	Value (\$)	% by Value	Loans	% by Loans
0 to 5	0	0.00%	0	0.00%
more than 5 to 10	0	0.00%	0	0.00%
more than 10 to 15	0	0.00%	0	0.00%
more than 15 to 20	0	0.00%	0	0.00%
more than 20 to 25	0	0.00%	0	0.00%
more than 25 to 30	0	0.00%	0	0.00%
Greater than 30	837,150,570	100.00%	2,608	100.00%
Total	837,150,570	100.00%	2,608	100.00%

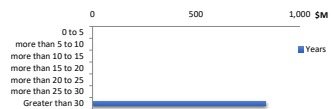


TABLE 11: ORIGINAL TERM

Years	Value (\$)	% by Value	Loans	% by Loans
0 to 5	0	0.00%	0	0.00%
more than 5 to 10	62,818	0.01%	1	0.04%
more than 10 to 15	1,927,625	0.23%	13	0.50%
more than 15 to 20	13,836,258	1.65%	71	2.72%
more than 20 to 25	66,880,531	7.97%	270	10.35%
more than 25 to 30	754,643,338	90.14%	2,253	86.39%
Greater than 30	0	0.00%	0	0.00%
Total	837,150,570	100.00%	2,608	100.00%

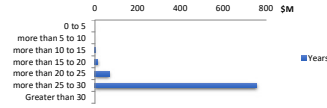


TABLE 12: LOAN TYPE

	Value (\$)	% by Value	Loans	% by Loans
Principal & Interest	764,877,269	91.37%	2,411	92.45%
Interest Only (excl. LOC)	72,273,301	8.63%	197	7.55%
Line of Credit	0	0.00%	0	0.00%
Total	837,150,570	100.00%	2,608	100.00%



TABLE 13: INTEREST ONLY REMAINING TERM

Years	Value (\$)	% by Value	Loans	% by Loans
0 to 1	19,092,995	2.28%	56	28.43%
more than 1 to 2	12,723,753	1.52%	38	19.29%
more than 2 to 3	27,905,308	3.33%	64	32.49%
more than 3 to 4	12,258,802	1.46%	35	17.77%
more than 4 to 5	292,443	0.03%	4	2.03%
more than 5 to 6	0	0.00%	0	0.00%
more than 6 to 7	0	0.00%	0	0.00%
more than 7 to 8	0	0.00%	0	0.00%
more than 8 to 9	0	0.00%	0	0.00%
more than 9 to 10	0	0.00%	0	0.00%
Greater than 10	0	0.00%	0	0.00%
Total	72,273,301	8.63%	197	100.00%

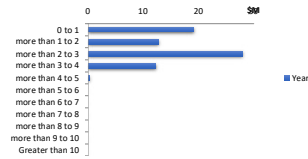


TABLE 14: REPAYMENT TYPE

	Value (\$)	% by Value	Loans	% by Loans
Rate Type	Balance	% Balance	Loan Count	% Loan Count
Variable Rate	815,187,608	97.38%	2,557	98.04%
Fixed Rate	21,962,962	2.62%	51	1.96%
Total	837,150,570	100.00%	2,608	100.00%



TABLE 15: FIXED RATE REMAINING TERM

Years	Value (\$)	% by Value	Loans	% by Loans
0 to 1	2,196,542	0.28%	8	0.31%
more than 1 to 2	611,730	0.07%	2	0.08%
more than 2 to 3	16,848,585	2.01%	35	1.34%
more than 3 to 4	2,306,106	0.28%	5	0.19%
more than 4 to 5	0	0.00%	0	0.00%
Greater than 5	0	0.00%	1	0.04%
Total	21,962,962	2.62%	51	1.96%



TABLE 16: BORROWER TYPE

	Value (\$)	% by Value	Loans	% by Loans
Individual	377,433,546	45.09%	735	30.30%
Company	459,717,025	54.91%	1,691	69.70%
Total	837,150,570	100.00%	2,426	100.00%



TABLE 17: OCCUPANCY TYPE

	Value (\$)	% by Value	Loans	% by Loans
Owner Occupied	245,025,329	29.27%	536	20.55%
Investment	592,125,241	70.73%	2,072	79.45%
Total	837,150,570	100.00%	2,608	100.00%



TABLE 18: PROPERTY TYPE

	Value (\$)	% by Value	Loans	% by Loans
House	535,395,373	63.95%	1,340	55.23%
Apartment	53,991,056	6.40%	165	6.80%
Townhouse	61,906,659	7.39%	256	10.55%
Unit	185,560,493	22.17%	659	27.16%
Villa	696,989	0.08%	6	0.25%
Vacant Land	0	0.00%	0	0.00%
Rural Residential	0	0.00%	0	0.00%
Total	837,150,570	100.00%	2,426	100.00%

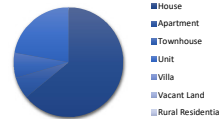


TABLE 19: INTEREST RATE DISTRIBUTION

Percentage	Value (\$)	% by Value	Loans	% by Loans
less than 4.5%	298,427	0.04%	1	0.04%
4.5% to less than 5%	146,907	0.02%	1	0.04%
5% to less than 5.5%	0	0.00%	0	0.00%
5.5% to less than 6%	27,802,844	3.30%	79	3.03%
6% to less than 6.5%	86,844,747	10.37%	203	7.78%
6.5% to less than 7%	189,942,728	22.69%	460	17.64%
7% to less than 7.5%	413,085,928	49.34%	1,427	54.72%
7.5% to less than 8%	85,226,926	10.18%	265	10.16%
8% to less than 8.5%	11,268,679	1.35%	43	1.65%
Greater than 8.5%	22,733,385	2.72%	129	4.95%
Total	837,150,570	100.00%	2,608	100.00%

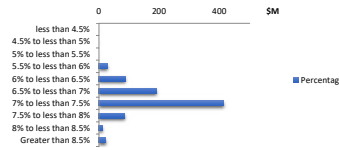


TABLE 20: TOP 10 POST CODES - by value

Postcode	Value (\$)	% by Value	Loans	% by Loans
Postcode	Balance	% Balance	Loan Count	% Loan Count
3029	19,912,870	2.38%	51	1.96%
2765	13,740,017	1.64%	17	0.65%
4207	12,183,641	1.46%	55	2.11%
4503	11,278,144	1.35%	55	2.11%
2154	9,745,293	1.16%	14	0.54%
3064	9,153,150	1.09%	29	1.11%
3000	7,791,278	0.93%	24	0.92%
4301	7,647,431	0.91%	32	1.23%
4300	7,269,593	0.87%	28	1.07%
4505	7,220,921	0.86%	32	1.23%
Total	105,942,327	12.66%	337	12.92%

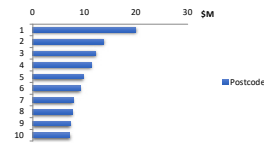


TABLE 21: Hardship

Hardship Type	Value (\$)	% by Value	Loans	% by Loans
COVID-19	-	0.00%	0	0.00%
Standard	1,742,089.77	0.21%	3	0.12%
Non-Hardship	835,408,480.67	99.79%	2,605	99.88%
Total	837,150,570	100.00%	2,608	100.00%



TABLE 22: Green Loans

Green Loans	Value (\$)	% by Value	Loans	% by Loans
Yes	829,894,782.92	99.13%	2574	98.70%
No	7,255,787.52	0.87%	34	1.30%
Total	837,150,570	100.00%	2,608	100.00%

