

**Triton Bond Trust 2025-4 Series 1**

**Collateral Report**

OK

Model Period	1
Collection Period Start	11-Dec-25
Collection Period End	31-Dec-25
No. of Days	21
Interest Period Start	11-Dec-25
Interest Period End	12-Jan-26
No. of Days	33
Determination Date	9-Jan-26
Payment Date	13-Jan-26

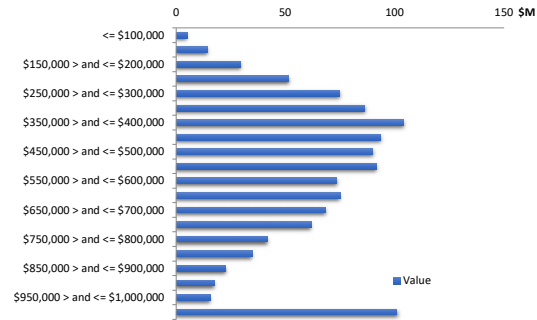


**TABLE 1: PORTFOLIO SUMMARY**

Description	Value
Pool Cut Date	31-Dec-25
Total Loan Pool Balance	1,152,265,872
No. of Loans (Unconsolidated)	2,779
No. of Loans (Consolidated)	2,677
Average Loan Balance (Consolidated)	430,432
Maximum Loan Balance (consolidated)	2,430,116
Weighted Average Current LVR (%)	63.50%
Maximum Current LVR (%)	95.02%
Weighted Average Interest Rate	6.43%
Weighted Average Fixed Rate	6.63%
Weighted Average Variable Rate	6.43%
Weighted Average Seasoning (years)	1.84
Weighted Average Remaining Term (years)	26.42
Maximum Remaining Term (years)	29.83
Percentage of Fixed Rate Loans (%)	1.42%
Percentage of Interest Only Loans (%)	7.20%
Percentage of Line of Credit Loans (%)	0.00%
Percentage of Low Documentation Loans (%)	0.00%

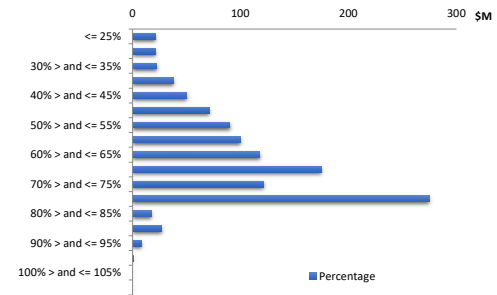
**TABLE 2: CURRENT LOAN BALANCE - (Consolidated)**

Value	Value (\$)	% by Value	Loans	% by Loans
<= \$100,000	4,971,956	0.43%	99	3.70%
\$100,000 > and <= \$150,000	14,443,916	1.25%	114	4.26%
\$150,000 > and <= \$200,000	29,630,664	2.57%	168	6.28%
\$200,000 > and <= \$250,000	51,588,064	4.48%	228	8.52%
\$250,000 > and <= \$300,000	74,829,083	6.49%	271	10.12%
\$300,000 > and <= \$350,000	86,345,278	7.49%	265	9.90%
\$350,000 > and <= \$400,000	103,756,612	9.00%	278	10.38%
\$400,000 > and <= \$450,000	93,300,501	8.10%	220	8.22%
\$450,000 > and <= \$500,000	89,868,138	7.80%	189	7.06%
\$500,000 > and <= \$550,000	91,528,764	7.94%	175	6.54%
\$550,000 > and <= \$600,000	73,557,719	6.38%	128	4.78%
\$600,000 > and <= \$650,000	74,897,051	6.50%	120	4.48%
\$650,000 > and <= \$700,000	68,328,151	5.93%	101	3.77%
\$700,000 > and <= \$750,000	61,789,048	5.36%	85	3.18%
\$750,000 > and <= \$800,000	41,721,838	3.62%	54	2.02%
\$800,000 > and <= \$850,000	34,706,484	3.01%	42	1.57%
\$850,000 > and <= \$900,000	22,776,137	1.98%	26	0.97%
\$900,000 > and <= \$950,000	17,551,888	1.52%	19	0.71%
\$950,000 > and <= \$1,000,000	15,644,867	1.36%	16	0.60%
> \$1,000,000	101,029,713	8.77%	79	2.95%
<b>Total</b>	<b>1,152,265,872</b>	<b>100.00%</b>	<b>2,677</b>	<b>100.00%</b>



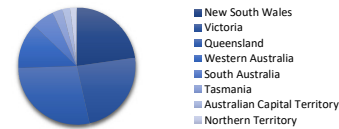
**TABLE 3: CURRENT LVR - (Consolidated)**

Percentage	Value (\$)	% by Value	Loans	% by Loans
<= 25%	20,888,504	1.81%	166	6.20%
25% > and <= 30%	21,023,488	1.82%	84	3.14%
30% > and <= 35%	22,196,870	1.93%	79	2.95%
35% > and <= 40%	37,669,640	3.27%	132	4.93%
40% > and <= 45%	49,828,630	4.32%	156	5.83%
45% > and <= 50%	70,612,833	6.13%	200	7.47%
50% > and <= 55%	89,941,317	7.81%	222	8.29%
55% > and <= 60%	99,579,638	8.64%	250	9.34%
60% > and <= 65%	117,547,007	10.20%	251	9.38%
65% > and <= 70%	174,612,602	15.15%	354	13.22%
70% > and <= 75%	121,319,611	10.53%	222	8.29%
75% > and <= 80%	274,811,173	23.85%	487	18.19%
80% > and <= 85%	17,159,629	1.49%	26	0.97%
85% > and <= 90%	26,551,400	2.30%	36	1.34%
90% > and <= 95%	7,915,426	0.69%	11	0.41%
95% > and <= 100%	608,103	0.05%	1	0.04%
100% > and <= 105%	0	0.00%	0	0.00%
> 105%	0	0.00%	0	0.00%
<b>Total</b>	<b>1,152,265,872</b>	<b>100.00%</b>	<b>2,677</b>	<b>100.00%</b>



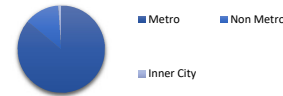
**TABLE 4: GEOGRAPHIC DISTRIBUTION - by primary security property**

State	Value (\$)	% by Value	Loans	% by Loans
New South Wales	261,908,581	22.73%	526	18.93%
Victoria	274,191,481	23.80%	639	22.99%
Queensland	322,510,900	27.99%	886	31.88%
Western Australia	144,647,050	12.55%	354	12.74%
South Australia	71,474,542	6.20%	202	7.27%
Tasmania	32,003,611	2.78%	66	2.37%
Australian Capital Territory	24,461,202	2.12%	66	2.37%
Northern Territory	21,068,504	1.83%	40	1.44%
<b>Total</b>	<b>1,152,265,872</b>	<b>100.00%</b>	<b>2,779</b>	<b>100.00%</b>



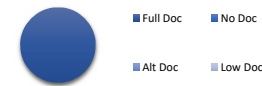
**TABLE 5: METRO VS. NON-METRO DISTRIBUTION - by primary security property**

Location	Value (\$)	% by Value	Loans	% by Loans
Metro	990,136,180	85.93%	2,354	84.71%
Non Metro	150,015,987	13.02%	395	14.21%
Inner City	12,113,704	1.05%	30	1.08%
<b>Total</b>	<b>1,152,265,872</b>	<b>100.00%</b>	<b>2,779</b>	<b>100.00%</b>



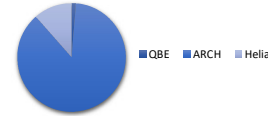
**TABLE 6: DOCUMENTATION TYPE**

Documentation	Value (\$)	% by Value	Loans	% by Loans
Full Doc	1,152,265,871.50	100.00%	2,779	100.00%
No Doc	0.00	0.00%	0	0.00%
Alt Doc	0.00	0.00%	0	0.00%
Low Doc	0.00	0.00%	0	0.00%
<b>Total</b>	<b>1,152,265,872</b>	<b>100.00%</b>	<b>2,779</b>	<b>100.00%</b>



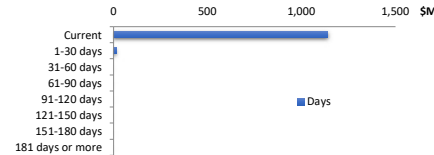
**TABLE 7: MORTGAGE INSURER**

LMI Provider	Value (\$)	% by Value	Loans	% by Loans
QBE	591,004	0.05%	2	0.07%
ARCH	38,957,853	3.38%	60	2.16%
Helia	5,106,581	0.44%	15	0.54%
No Data	1,107,610,433	96.12%	2,702	97.23%
<b>Total</b>	<b>1,152,265,872</b>	<b>100.00%</b>	<b>2,779</b>	<b>100.00%</b>



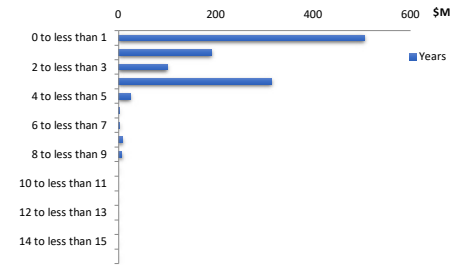
**TABLE 8: ARREARS**

Days	Value (\$)	% by Value	Loans	% by Loans
Current	1,136,972,620	98.67%	2,749	98.92%
1-30 days	15,293,251	1.33%	30	1.08%
31-60 days	0	0.00%	0	0.00%
61-90 days	0	0.00%	0	0.00%
91-120 days	0	0.00%	0	0.00%
121-150 days	0	0.00%	0	0.00%
151-180 days	0	0.00%	0	0.00%
181 days or more	0	0.00%	0	0.00%
<b>Total</b>	<b>1,152,265,872</b>	<b>100.00%</b>	<b>2,779</b>	<b>100.00%</b>



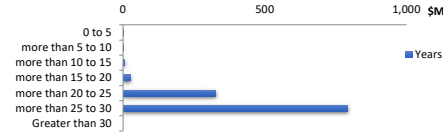
**TABLE 9: SEASONING**

Years	Value (\$)	% by Value	Loans	% by Loans
0 to less than 1	504,501,841	43.78%	1,054	37.93%
1 to less than 2	190,363,063	16.52%	334	12.02%
2 to less than 3	99,409,162	8.63%	179	6.44%
3 to less than 4	314,422,509	27.29%	1,021	36.74%
4 to less than 5	23,971,058	2.08%	78	2.81%
5 to less than 6	1,351,552	0.12%	4	0.14%
6 to less than 7	2,298,058	0.20%	12	0.43%
7 to less than 8	7,965,003	0.69%	42	1.51%
8 to less than 9	7,096,872	0.62%	49	1.76%
9 to less than 10	600,087	0.05%	3	0.11%
10 to less than 11	0	0.00%	0	0.00%
11 to less than 12	0	0.00%	0	0.00%
12 to less than 13	0	0.00%	0	0.00%
13 to less than 14	0	0.00%	0	0.00%
14 to less than 15	0	0.00%	0	0.00%
Greater than 15	286,667	0.02%	3	0.11%
<b>Total</b>	<b>1,152,265,872</b>	<b>100.00%</b>	<b>2,779</b>	<b>100.00%</b>



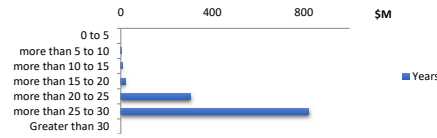
**TABLE 10: REMAINING TERM**

Years	Value (\$)	% by Value	Loans	% by Loans
0 to 5	195,875	0.02%	3	0.11%
more than 5 to 10	1,057,623	0.09%	9	0.32%
more than 10 to 15	6,492,100	0.56%	28	1.01%
more than 15 to 20	26,500,060	2.30%	100	3.60%
more than 20 to 25	326,535,753	28.34%	688	24.76%
more than 25 to 30	791,484,460	68.69%	1,951	70.21%
Greater than 30	0	0.00%	0	0.00%
<b>Total</b>	<b>1,152,265,872</b>	<b>100.00%</b>	<b>2,779</b>	<b>100.00%</b>



**TABLE 11: ORIGINAL TERM**

Years	Value (\$)	% by Value	Loans	% by Loans
0 to 5	0	0.00%	0	0.00%
more than 5 to 10	278,333	0.02%	3	0.11%
more than 10 to 15	5,084,087	0.44%	19	0.68%
more than 15 to 20	19,713,195	1.71%	69	2.48%
more than 20 to 25	305,966,670	26.55%	582	20.94%
more than 25 to 30	821,223,587	71.27%	2,106	75.78%
Greater than 30	0	0.00%	0	0.00%
<b>Total</b>	<b>1,152,265,872</b>	<b>100.00%</b>	<b>2,779</b>	<b>100.00%</b>



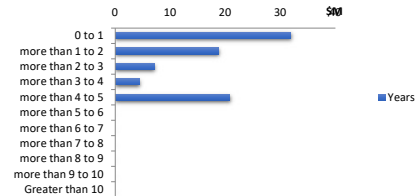
**TABLE 12: LOAN TYPE**

	Value (\$)	% by Value	Loans	% by Loans
Principal & Interest	1,069,269,452	92.80%	2,610	93.92%
Interest Only (excl. LOC)	82,996,420	7.20%	169	6.08%
Line of Credit	0	0.00%	0	0.00%
<b>Total</b>	<b>1,152,265,872</b>	<b>100.00%</b>	<b>2,779</b>	<b>100.00%</b>



**TABLE 13: INTEREST ONLY REMAINING TERM**

Years	Value (\$)	% by Value	Loans	% by Loans
0 to 1	31,937,595	2.77%	53	31.36%
more than 1 to 2	18,751,049	1.63%	51	30.18%
more than 2 to 3	7,091,521	0.62%	10	5.92%
more than 3 to 4	4,412,641	0.38%	9	5.33%
more than 4 to 5	20,803,614	1.81%	46	27.22%
more than 5 to 6	0	0.00%	0	0.00%
more than 6 to 7	0	0.00%	0	0.00%
more than 7 to 8	0	0.00%	0	0.00%
more than 8 to 9	0	0.00%	0	0.00%
more than 9 to 10	0	0.00%	0	0.00%
Greater than 10	0	0.00%	0	0.00%
<b>Total</b>	<b>82,996,420</b>	<b>7.20%</b>	<b>169</b>	<b>100.00%</b>



**TABLE 14: REPAYMENT TYPE**

	Value (\$)	% by Value	Loans	% by Loans
<b>Rate Type</b>	<b>Balance</b>	<b>% Balance</b>	<b>Loan Count</b>	<b>% Loan Count</b>
Variable Rate	1,135,907,026	98.58%	2,751	98.99%
Fixed Rate	16,358,846	1.42%	28	1.01%
<b>Total</b>	<b>1,152,265,872</b>	<b>100.00%</b>	<b>2,779</b>	<b>100.00%</b>



**TABLE 15: FIXED RATE REMAINING TERM**

Years	Value (\$)	% by Value	Loans	% by Loans
0 to 1	709,052	0.06%	2	0.07%
more than 1 to 2	235,300	0.02%	1	0.04%
more than 2 to 3	9,728,121	0.84%	16	0.58%
more than 3 to 4	2,634,134	0.23%	5	0.18%
more than 4 to 5	3,052,238	0.26%	4	0.14%
Greater than 5	0	0.00%	0	0.00%
<b>Total</b>	<b>16,358,846</b>	<b>1.42%</b>	<b>28</b>	<b>1.01%</b>



**TABLE 16: BORROWER TYPE**

	Value (\$)	% by Value	Loans	% by Loans
Individual	343,682,744	29.83%	595	22.23%
Company	808,583,127	70.17%	2,082	77.77%
<b>Total</b>	<b>1,152,265,872</b>	<b>100.00%</b>	<b>2,677</b>	<b>100.00%</b>



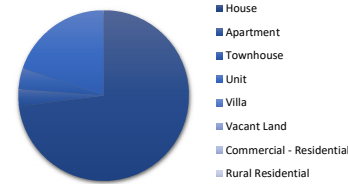
**TABLE 17: OCCUPANCY TYPE**

	Value (\$)	% by Value	Loans	% by Loans
Owner Occupied	141,082,689	12.24%	237	8.53%
Investment	1,011,183,183	87.76%	2,542	91.47%
<b>Total</b>	<b>1,152,265,872</b>	<b>100.00%</b>	<b>2,779</b>	<b>100.00%</b>



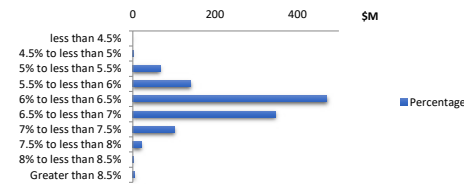
**TABLE 18: PROPERTY TYPE**

	Value (\$)	% by Value	Loans	% by Loans
House	840,356,065	72.93%	1,742	65.07%
Apartment	37,273,853	3.23%	110	4.11%
Townhouse	45,956,462	3.99%	166	6.20%
Unit	228,679,491	19.85%	659	24.62%
Villa	0	0.00%	0	0.00%
Vacant Land	0	0.00%	0	0.00%
Commercial - Residential	0	0.00%	0	0.00%
Rural Residential	0	0.00%	0	0.00%
<b>Total</b>	<b>1,152,265,872</b>	<b>100.00%</b>	<b>2,677</b>	<b>100.00%</b>



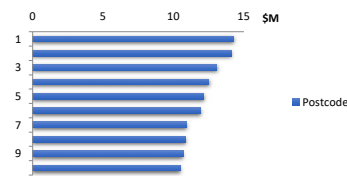
**TABLE 19: INTEREST RATE DISTRIBUTION**

Percentage	Value (\$)	% by Value	Loans	% by Loans
less than 4.5%	0	0.00%	0	0.00%
4.5% to less than 5%	1,254,251	0.11%	2	0.07%
5% to less than 5.5%	66,023,104	5.73%	117	4.21%
5.5% to less than 6%	140,474,981	12.19%	254	9.14%
6% to less than 6.5%	470,316,096	40.82%	1,117	40.19%
6.5% to less than 7%	345,960,708	30.02%	924	33.25%
7% to less than 7.5%	101,706,782	8.83%	275	9.90%
7.5% to less than 8%	20,850,532	1.81%	57	2.05%
8% to less than 8.5%	1,517,546	0.13%	5	0.18%
Greater than 8.5%	4,161,872	0.36%	28	1.01%
<b>Total</b>	<b>1,152,265,872</b>	<b>100.00%</b>	<b>2,779</b>	<b>100.00%</b>



**TABLE 20: TOP 10 POST CODES - by value**

Postcode	Balance	% Balance	Loan Count	% Loan Count
3064	14,258,800	1.24%	31	1.12%
6171	14,106,868	1.22%	30	1.08%
3029	13,088,250	1.14%	25	0.90%
4207	12,512,072	1.09%	30	1.08%
3024	12,152,588	1.05%	28	1.01%
4503	11,905,551	1.03%	38	1.37%
3977	10,896,633	0.95%	20	0.72%
3978	10,869,751	0.94%	25	0.90%
4209	10,681,638	0.93%	28	1.01%
3338	10,477,932	0.91%	22	0.79%
<b>Total</b>	<b>120,950,082</b>	<b>10.50%</b>	<b>277</b>	<b>9.97%</b>



**TABLE 21: Hardship**

Hardship Type	Value (\$)	% by Value	Loans	% by Loans
COVID-19	-	0.00%	0	0.00%
Standard	-	0.00%	0	0.00%
Non-Hardship	1,152,265,871.50	100.00%	2,779	100.00%
<b>Total</b>	<b>1,152,265,872</b>	<b>100.00%</b>	<b>2,779</b>	<b>100.00%</b>

