

**Triton Bond Trust 2025-4 Series 1**

**Collateral Report**

OK

Model Period	3
Collection Period Start	1-Feb-26
Collection Period End	28-Feb-26
No. of Days	28
Interest Period Start	13-Feb-26
Interest Period End	12-Mar-26
No. of Days	28
Determination Date	11-Mar-26
Payment Date	13-Mar-26



**TABLE 1: PORTFOLIO SUMMARY**

Description	Value
Pool Cut Date	28-Feb-26
Total Loan Pool Balance	1,129,382,274.71
No. of Loans (Unconsolidated)	2,745
No. of Loans (Consolidated)	2,643
Average Loan Balance (Consolidated)	427,311
Maximum Loan Balance (consolidated)	2,425,726
Weighted Average Current LVR (%)	63.27%
Maximum Current LVR (%)	94.47%
Weighted Average Interest Rate	6.67%
Weighted Average Fixed Rate	6.53%
Weighted Average Variable Rate	6.67%
Weighted Average Seasoning (years)	2.00
Weighted Average Remaining Term (years)	26.26
Maximum Remaining Term (years)	29.67
Percentage of Fixed Rate Loans (%)	1.48%
Percentage of Interest Only Loans (%)	6.31%
Percentage of Line of Credit Loans (%)	0.00%
Percentage of Low Documentation Loans (%)	0.00%

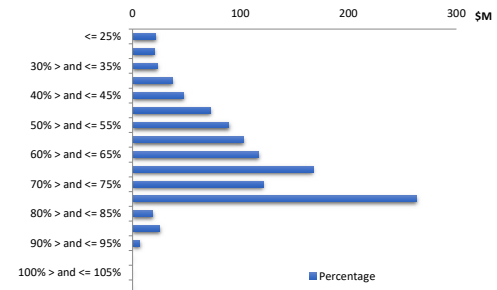
**TABLE 2: CURRENT LOAN BALANCE - (Consolidated)**

Value	Value (\$)	% by Value	Loans	% by Loans
<= \$100,000	4,356,106	0.39%	98	3.71%
\$100,000 > and <= \$150,000	16,127,883	1.43%	127	4.81%
\$150,000 > and <= \$200,000	27,192,037	2.41%	154	5.83%
\$200,000 > and <= \$250,000	53,123,588	4.70%	235	8.89%
\$250,000 > and <= \$300,000	74,956,555	6.64%	271	10.25%
\$300,000 > and <= \$350,000	85,004,273	7.53%	260	9.84%
\$350,000 > and <= \$400,000	100,962,260	8.94%	270	10.22%
\$400,000 > and <= \$450,000	92,437,931	8.18%	218	8.25%
\$450,000 > and <= \$500,000	87,931,386	7.79%	185	7.00%
\$500,000 > and <= \$550,000	89,368,899	7.91%	171	6.47%
\$550,000 > and <= \$600,000	74,045,736	6.56%	129	4.88%
\$600,000 > and <= \$650,000	74,779,832	6.62%	120	4.54%
\$650,000 > and <= \$700,000	63,395,698	5.61%	94	3.56%
\$700,000 > and <= \$750,000	58,850,089	5.21%	81	3.06%
\$750,000 > and <= \$800,000	38,530,298	3.41%	50	1.89%
\$800,000 > and <= \$850,000	36,280,732	3.21%	44	1.66%
\$850,000 > and <= \$900,000	21,913,397	1.94%	25	0.95%
\$900,000 > and <= \$950,000	23,112,421	2.05%	25	0.95%
\$950,000 > and <= \$1,000,000	11,789,720	1.04%	12	0.45%
> \$1,000,000	95,229,433	8.43%	74	2.80%
<b>Total</b>	<b>1,129,382,274</b>	<b>100.00%</b>	<b>2,643</b>	<b>100.00%</b>



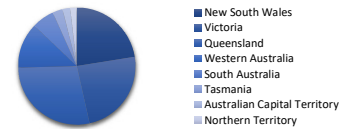
**TABLE 3: CURRENT LVR - (Consolidated)**

Percentage	Value (\$)	% by Value	Loans	% by Loans
<= 25%	21,454,899	1.90%	175	6.62%
25% > and <= 30%	20,060,694	1.78%	80	3.03%
30% > and <= 35%	22,739,029	2.01%	84	3.18%
35% > and <= 40%	36,822,082	3.26%	129	4.88%
40% > and <= 45%	47,220,400	4.18%	151	5.71%
45% > and <= 50%	72,008,183	6.38%	199	7.53%
50% > and <= 55%	89,104,933	7.89%	215	8.13%
55% > and <= 60%	102,504,219	9.08%	255	9.65%
60% > and <= 65%	116,476,285	10.31%	258	9.76%
65% > and <= 70%	167,011,277	14.79%	337	12.75%
70% > and <= 75%	120,899,116	10.70%	220	8.32%
75% > and <= 80%	262,670,664	23.26%	468	17.71%
80% > and <= 85%	18,659,044	1.65%	28	1.06%
85% > and <= 90%	25,045,615	2.22%	34	1.29%
90% > and <= 95%	6,705,836	0.59%	10	0.38%
95% > and <= 100%	0	0.00%	0	0.00%
100% > and <= 105%	0	0.00%	0	0.00%
> 105%	0	0.00%	0	0.00%
<b>Total</b>	<b>1,129,382,275</b>	<b>100.00%</b>	<b>2,643</b>	<b>100.00%</b>



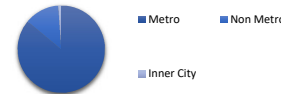
**TABLE 4: GEOGRAPHIC DISTRIBUTION - by primary security property**

State	Value (\$)	% by Value	Loans	% by Loans
New South Wales	253,684,042	22.46%	523	19.05%
Victoria	271,703,628	24.06%	636	23.17%
Queensland	316,607,774	28.03%	875	31.88%
Western Australia	141,485,468	12.53%	345	12.57%
South Australia	70,500,908	6.24%	199	7.25%
Tasmania	30,354,113	2.69%	63	2.30%
Australian Capital Territory	24,020,588	2.13%	64	2.33%
Northern Territory	21,025,753	1.86%	40	1.48%
<b>Total</b>	<b>1,129,382,275</b>	<b>100.00%</b>	<b>2,745</b>	<b>100.00%</b>



**TABLE 5: METRO VS. NON-METRO DISTRIBUTION - by primary security property**

Location	Value (\$)	% by Value	Loans	% by Loans
Metro	971,187,345	85.99%	2,324	84.66%
Non Metro	146,082,061	12.93%	391	14.24%
Inner City	12,112,869	1.07%	30	1.09%
<b>Total</b>	<b>1,129,382,275</b>	<b>100.00%</b>	<b>2,745</b>	<b>100.00%</b>



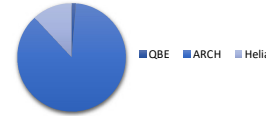
**TABLE 6: DOCUMENTATION TYPE**

Documentation	Value (\$)	% by Value	Loans	% by Loans
Full Doc	1,129,382,274.71	100.00%	2,745	100.00%
No Doc	0.00	0.00%	0	0.00%
Alt Doc	0.00	0.00%	0	0.00%
Low Doc	0.00	0.00%	0	0.00%
<b>Total</b>	<b>1,129,382,275</b>	<b>100.00%</b>	<b>2,745</b>	<b>100.00%</b>



**TABLE 7: MORTGAGE INSURER**

LMI Provider	Value (\$)	% by Value	Loans	% by Loans
QBE	588,674	0.05%	2	0.07%
ARCH	37,007,043	3.28%	59	2.15%
Helia	5,078,425	0.45%	15	0.55%
No Data	1,086,708,132	96.22%	2,669	97.23%
<b>Total</b>	<b>1,129,382,275</b>	<b>100.00%</b>	<b>2,745</b>	<b>100.00%</b>



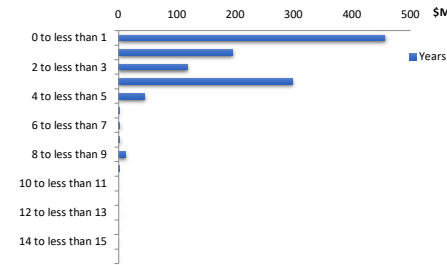
**TABLE 8: ARREARS**

Days	Value (\$)	% by Value	Loans	% by Loans
Current	1,108,840,295	98.18%	2,707	98.62%
1-30 days	18,820,354	1.67%	35	1.28%
31-60 days	1,721,626	0.15%	3	0.11%
61-90 days	0	0.00%	0	0.00%
91-120 days	0	0.00%	0	0.00%
121-150 days	0	0.00%	0	0.00%
151-180 days	0	0.00%	0	0.00%
181 days or more	0	0.00%	0	0.00%
<b>Total</b>	<b>1,129,382,275</b>	<b>100.00%</b>	<b>2,745</b>	<b>100.00%</b>



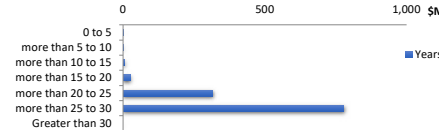
**TABLE 9: SEASONING**

Years	Value (\$)	% by Value	Loans	% by Loans
0 to less than 1	455,563,418	40.34%	962	35.05%
1 to less than 2	195,029,378	17.27%	353	12.86%
2 to less than 3	117,635,234	10.42%	222	8.09%
3 to less than 4	297,044,386	26.30%	941	34.28%
4 to less than 5	44,953,112	3.98%	154	5.61%
5 to less than 6	1,325,601	0.12%	4	0.15%
6 to less than 7	2,320,348	0.21%	12	0.44%
7 to less than 8	2,343,550	0.21%	11	0.40%
8 to less than 9	12,273,206	1.09%	80	2.91%
9 to less than 10	612,617	0.05%	3	0.11%
10 to less than 11	0	0.00%	0	0.00%
11 to less than 12	0	0.00%	0	0.00%
12 to less than 13	0	0.00%	0	0.00%
13 to less than 14	0	0.00%	0	0.00%
14 to less than 15	0	0.00%	0	0.00%
Greater than 15	281,425	0.02%	3	0.11%
<b>Total</b>	<b>1,129,382,275</b>	<b>100.00%</b>	<b>2,745</b>	<b>100.00%</b>



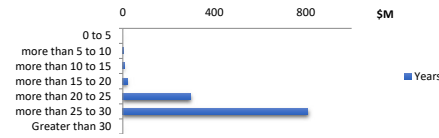
**TABLE 10: REMAINING TERM**

Years	Value (\$)	% by Value	Loans	% by Loans
0 to 5	192,494	0.02%	3	0.11%
more than 5 to 10	1,274,067	0.11%	12	0.44%
more than 10 to 15	6,338,114	0.56%	27	0.98%
more than 15 to 20	26,549,080	2.35%	100	3.64%
more than 20 to 25	317,164,201	28.08%	676	24.63%
more than 25 to 30	777,864,319	68.88%	1,927	70.20%
Greater than 30	0	0.00%	0	0.00%
<b>Total</b>	<b>1,129,382,275</b>	<b>100.00%</b>	<b>2,745</b>	<b>100.00%</b>



**TABLE 11: ORIGINAL TERM**

Years	Value (\$)	% by Value	Loans	% by Loans
0 to 5	0	0.00%	0	0.00%
more than 5 to 10	268,797	0.02%	3	0.11%
more than 10 to 15	5,046,981	0.45%	19	0.69%
more than 15 to 20	19,190,530	1.70%	69	2.51%
more than 20 to 25	297,264,692	26.32%	572	20.84%
more than 25 to 30	807,611,275	71.51%	2,082	75.85%
Greater than 30	0	0.00%	0	0.00%
<b>Total</b>	<b>1,129,382,275</b>	<b>100.00%</b>	<b>2,745</b>	<b>100.00%</b>



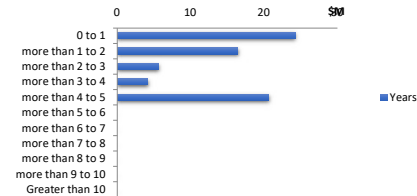
**TABLE 12: LOAN TYPE**

	Value (\$)	% by Value	Loans	% by Loans
Principal & Interest	1,058,118,987	93.69%	2,593	94.46%
Interest Only (excl. LOC)	71,263,288	6.31%	152	5.54%
Line of Credit	0	0.00%	0	0.00%
<b>Total</b>	<b>1,129,382,275</b>	<b>100.00%</b>	<b>2,745</b>	<b>100.00%</b>



**TABLE 13: INTEREST ONLY REMAINING TERM**

Years	Value (\$)	% by Value	Loans	% by Loans
0 to 1	24,287,527	2.15%	43	28.29%
more than 1 to 2	16,463,177	1.46%	45	29.61%
more than 2 to 3	5,635,587	0.50%	10	6.58%
more than 3 to 4	4,193,445	0.37%	8	5.26%
more than 4 to 5	20,683,552	1.83%	46	30.26%
more than 5 to 6	0	0.00%	0	0.00%
more than 6 to 7	0	0.00%	0	0.00%
more than 7 to 8	0	0.00%	0	0.00%
more than 8 to 9	0	0.00%	0	0.00%
more than 9 to 10	0	0.00%	0	0.00%
Greater than 10	0	0.00%	0	0.00%
<b>Total</b>	<b>71,263,288</b>	<b>6.31%</b>	<b>152</b>	<b>100.00%</b>



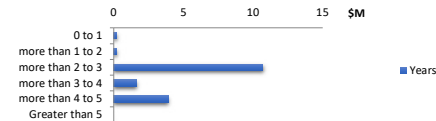
**TABLE 14: REPAYMENT TYPE**

	Value (\$)	% by Value	Loans	% by Loans
<b>Rate Type</b>	<b>Balance</b>	<b>% Balance</b>	<b>Loan Count</b>	<b>% Loan Count</b>
Variable Rate	1,112,644,590	98.52%	2,717	98.98%
Fixed Rate	16,737,684	1.48%	28	1.02%
<b>Total</b>	<b>1,129,382,275</b>	<b>100.00%</b>	<b>2,745</b>	<b>100.00%</b>



**TABLE 15: FIXED RATE REMAINING TERM**

Years	Value (\$)	% by Value	Loans	% by Loans
0 to 1	231,732	0.02%	1	0.04%
more than 1 to 2	232,900	0.02%	1	0.04%
more than 2 to 3	10,709,047	0.95%	18	0.66%
more than 3 to 4	1,651,645	0.15%	3	0.11%
more than 4 to 5	3,912,360	0.35%	4	0.15%
Greater than 5	0	0.00%	1	0.04%
<b>Total</b>	<b>16,737,684</b>	<b>1.48%</b>	<b>28</b>	<b>1.02%</b>



**TABLE 16: BORROWER TYPE**

	Value (\$)	% by Value	Loans	% by Loans
Individual	334,666,929	29.63%	581	21.98%
Company	794,715,345	70.37%	2,062	78.02%
<b>Total</b>	<b>1,129,382,275</b>	<b>100.00%</b>	<b>2,643</b>	<b>100.00%</b>



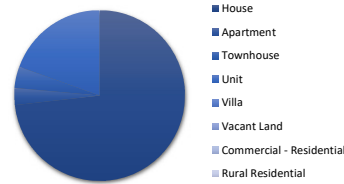
**TABLE 17: OCCUPANCY TYPE**

	Value (\$)	% by Value	Loans	% by Loans
Owner Occupied	138,584,193	12.27%	234	8.52%
Investment	990,798,082	87.73%	2,511	91.48%
<b>Total</b>	<b>1,129,382,275</b>	<b>100.00%</b>	<b>2,745</b>	<b>100.00%</b>



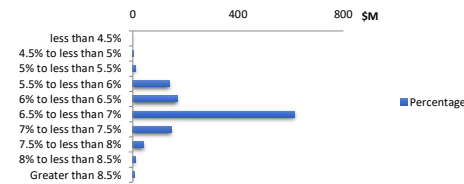
**TABLE 18: PROPERTY TYPE**

	Value (\$)	% by Value	Loans	% by Loans
House	826,532,159	73.18%	1,720	65.08%
Apartment	36,742,531	3.25%	109	4.12%
Townhouse	45,568,706	4.03%	164	6.21%
Unit	220,020,056	19.48%	649	24.56%
Villa	0	0.00%	0	0.00%
Vacant Land	0	0.00%	0	0.00%
Commercial - Residential	518,822	0.05%	1	0.04%
Rural Residential	0	0.00%	0	0.00%
<b>Total</b>	<b>1,129,382,275</b>	<b>100.00%</b>	<b>2,643</b>	<b>100.00%</b>



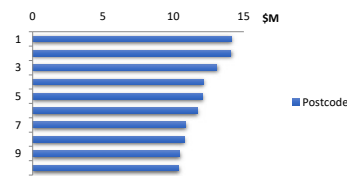
**TABLE 19: INTEREST RATE DISTRIBUTION**

Percentage	Value (\$)	% by Value	Loans	% by Loans
less than 4.5%	0	0.00%	1	0.04%
4.5% to less than 5%	232,900	0.02%	1	0.04%
5% to less than 5.5%	9,536,058	0.84%	20	0.73%
5.5% to less than 6%	138,289,722	12.24%	233	8.49%
6% to less than 6.5%	168,214,930	14.89%	356	12.97%
6.5% to less than 7%	615,336,370	54.48%	1,563	56.94%
7% to less than 7.5%	144,917,042	12.83%	408	14.86%
7.5% to less than 8%	41,328,478	3.66%	110	4.01%
8% to less than 8.5%	7,813,746	0.69%	26	0.95%
Greater than 8.5%	3,713,029	0.33%	27	0.98%
<b>Total</b>	<b>1,129,382,275</b>	<b>100.00%</b>	<b>2,745</b>	<b>100.00%</b>



**TABLE 20: TOP 10 POST CODES - by value**

Postcode	Value (\$)	% by Value	Loans	% by Loans
3064	14,089,500	1.25%	31	1.13%
6171	14,060,130	1.24%	30	1.09%
3029	13,083,716	1.16%	25	0.91%
3024	12,117,488	1.07%	28	1.02%
4207	12,060,316	1.07%	29	1.06%
4503	11,666,607	1.03%	36	1.31%
3977	10,870,620	0.96%	20	0.73%
4209	10,751,283	0.95%	28	1.02%
3338	10,398,876	0.92%	22	0.80%
3978	10,368,745	0.92%	24	0.87%
<b>Total</b>	<b>119,467,280</b>	<b>10.58%</b>	<b>273</b>	<b>9.95%</b>



**TABLE 21: Hardship**

Hardship Type	Value (\$)	% by Value	Loans	% by Loans
COVID-19	-	0.00%	0	0.00%
Standard	564,680.95	0.05%	1	0.04%
Non-Hardship	1,128,817,593.76	99.95%	2,744	99.96%
<b>Total</b>	<b>1,129,382,275</b>	<b>100.00%</b>	<b>2,745</b>	<b>100.00%</b>

