

Triton Bond Trust 2025-3

Collateral Report
OK

Model Period	11
Collection Period Start	1-Apr-26
Collection Period End	30-Apr-26
No. of Days	30
Interest Period Start	9-Apr-26
Interest Period End	10-May-26
No. of Days	32
Determination Date	7-May-26
Payment Date	11-May-26



TABLE 1: PORTFOLIO SUMMARY

Description	Value
Pool Cut Date	30-Apr-26
Total Loan Pool Balance	973,690,577
No. of Loans (Unconsolidated)	2,344
No. of Loans (Consolidated)	2,218
Average Loan Balance (Consolidated)	438,995
Maximum Loan Balance (consolidated)	2,950,234
Weighted Average Current LVR (%)	63.62%
Maximum Current LVR (%)	98.60%
Weighted Average Interest Rate	7.03%
Weighted Average Fixed Rate	7.35%
Weighted Average Variable Rate	7.03%
Weighted Average Seasoning (years)	1.82
Weighted Average Remaining Term (years)	27.48
Maximum Remaining Term (years)	29.92
Percentage of Fixed Rate Loans (%)	1.92%
Percentage of Interest Only Loans (%)	5.20%
Percentage of Line of Credit Loans (%)	0.00%
Percentage of Low Documentation Loans (%)	0.37%

TABLE 2: CURRENT LOAN BALANCE - (Consolidated)

Value	Value (\$)	% by Value	Loans	% by Loans
<= \$100,000	6,022,439	0.62%	130	5.86%
\$100,000 > and <= \$150,000	11,937,682	1.23%	95	4.28%
\$150,000 > and <= \$200,000	21,085,858	2.17%	118	5.32%
\$200,000 > and <= \$250,000	36,086,949	3.71%	159	7.17%
\$250,000 > and <= \$300,000	50,378,071	5.17%	182	8.21%
\$300,000 > and <= \$350,000	76,206,183	7.83%	233	10.50%
\$350,000 > and <= \$400,000	93,920,905	9.65%	250	11.27%
\$400,000 > and <= \$450,000	96,513,604	9.91%	227	10.23%
\$450,000 > and <= \$500,000	90,154,058	9.26%	190	8.57%
\$500,000 > and <= \$550,000	77,316,444	7.94%	148	6.67%
\$550,000 > and <= \$600,000	60,154,657	6.18%	105	4.73%
\$600,000 > and <= \$650,000	44,480,731	4.57%	71	3.20%
\$650,000 > and <= \$700,000	34,497,482	3.54%	51	2.30%
\$700,000 > and <= \$750,000	23,744,187	2.44%	33	1.49%
\$750,000 > and <= \$800,000	27,844,787	2.86%	36	1.62%
\$800,000 > and <= \$850,000	17,265,409	1.77%	21	0.95%
\$850,000 > and <= \$900,000	23,557,289	2.42%	27	1.22%
\$900,000 > and <= \$950,000	17,520,959	1.80%	19	0.86%
\$950,000 > and <= \$1,000,000	18,419,038	1.89%	19	0.86%
> \$1,000,000	146,583,844	15.05%	104	4.69%
Total	973,690,577	100.00%	2,218	100.00%

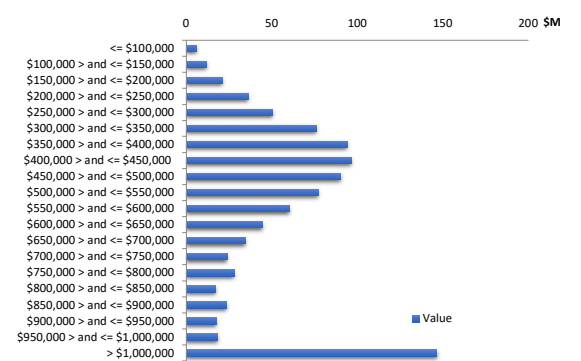


TABLE 3: CURRENT LVR - (Consolidated)

Percentage	Value (\$)	% by Value	Loans	% by Loans
<= 25%	29,643,084	3.04%	235	10.60%
25% > and <= 30%	20,828,308	2.14%	83	3.74%
30% > and <= 35%	29,560,643	3.04%	97	4.37%
35% > and <= 40%	29,503,373	3.03%	90	4.06%
40% > and <= 45%	35,023,565	3.60%	92	4.15%
45% > and <= 50%	43,229,957	4.44%	101	4.55%
50% > and <= 55%	46,917,512	4.82%	112	5.05%
55% > and <= 60%	79,962,329	8.21%	159	7.17%
60% > and <= 65%	90,985,619	9.34%	187	8.43%
65% > and <= 70%	165,935,414	17.04%	315	14.20%
70% > and <= 75%	95,562,754	9.82%	177	7.98%
75% > and <= 80%	271,630,475	27.90%	518	23.35%
80% > and <= 85%	15,499,273	1.59%	25	1.13%
85% > and <= 90%	12,941,629	1.33%	18	0.81%
90% > and <= 95%	5,103,116	0.52%	7	0.32%
95% > and <= 100%	1,343,527	0.14%	2	0.09%
100% > and <= 105%	0	0.00%	0	0.00%
> 105%	0	0.00%	0	0.00%
Total	973,690,577	100.00%	2,218	100.00%

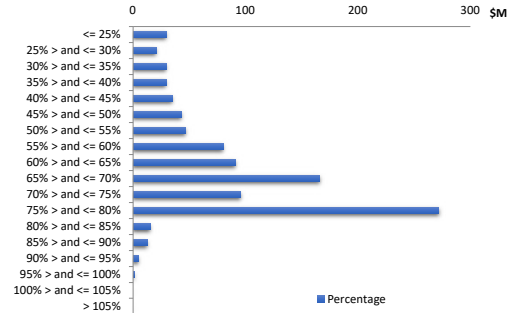


TABLE 4: GEOGRAPHIC DISTRIBUTION - by primary security property

State	Value (\$)	% by Value	Loans	% by Loans
New South Wales	242,713,285	24.93%	505	21.54%
Victoria	225,431,416	23.15%	544	23.21%
Queensland	337,965,160	34.71%	876	37.37%
Western Australia	88,344,430	9.07%	216	9.22%
South Australia	45,633,903	4.69%	118	5.03%
Tasmania	10,931,815	1.12%	30	1.28%
Australian Capital Territory	14,465,291	1.49%	35	1.49%
Northern Territory	8,205,278	0.84%	20	0.85%
Total	973,690,577	100.00%	2,344	100.00%

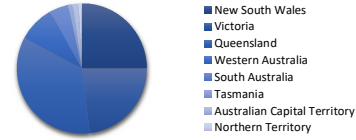


TABLE 5: METRO VS. NON-METRO DISTRIBUTION - by primary security property

Location	Value (\$)	% by Value	Loans	% by Loans
Metro	732,978,097	75.28%	1,721	73.42%
Non Metro	205,016,622	21.06%	546	23.29%
Inner City	35,695,859	3.67%	77	3.28%
Total	973,690,577	100.00%	2,344	100.00%

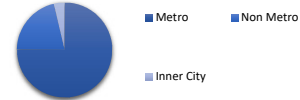


TABLE 6: DOCUMENTATION TYPE

Documentation	Value (\$)	% by Value	Loans	% by Loans
Full Doc	968,602,541.80	99.48%	2,298	98.04%
No Doc	0.00	0.00%	0	0.00%
Alt Doc	1,462,883.50	0.15%	12	0.51%
Low Doc	3,625,151.87	0.37%	34	1.45%
Total	973,690,577	100.00%	2,344	100.00%

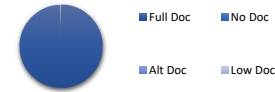


TABLE 7: MORTGAGE INSURER

LMI Provider	Value (\$)	% by Value	Loans	% by Loans
QBE	4,963,084	0.51%	40	1.71%
ARCH	43,094,802	4.43%	67	2.86%
Helia	33,086,894	3.40%	135	5.76%
No Data	892,545,797	91.67%	2,102	89.68%
Total	973,690,577	100.00%	2,344	100.00%

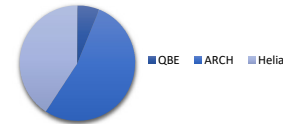


TABLE 8: ARREARS

Days	Value (\$)	% by Value	Loans	% by Loans
Current	950,631,988	97.63%	2,289	97.65%
1-30 days	20,010,330	2.06%	51	2.18%
31-60 days	2,908,002	0.30%	3	0.13%
61-90 days	0	0.00%	0	0.00%
91-120 days	140,256	0.01%	1	0.04%
121-150 days	0	0.00%	0	0.00%
151-180 days	0	0.00%	0	0.00%
181 days or more	0	0.00%	0	0.00%
Total	973,690,577	100.00%	2,344	100.00%



TABLE 9: SEASONING

Years	Value (\$)	% by Value	Loans	% by Loans
0 to less than 1	91,367,239	9.38%	122	5.20%
1 to less than 2	698,496,409	71.74%	1,631	69.58%
2 to less than 3	99,785,092	10.25%	251	10.71%
3 to less than 4	27,088,338	2.78%	60	2.56%
4 to less than 5	4,873,791	0.50%	11	0.47%
5 to less than 6	7,431,315	0.76%	25	1.07%
6 to less than 7	17,673,404	1.82%	81	3.46%
7 to less than 8	11,996,625	1.23%	61	2.60%
8 to less than 9	5,221,725	0.54%	24	1.02%
9 to less than 10	1,390,908	0.14%	6	0.26%
10 to less than 11	134,250	0.01%	1	0.04%
11 to less than 12	0	0.00%	0	0.00%
12 to less than 13	0	0.00%	0	0.00%
13 to less than 14	0	0.00%	0	0.00%
14 to less than 15	0	0.00%	0	0.00%
Greater than 15	8,231,480	0.85%	71	3.03%
Total	973,690,577	100.00%	2,344	100.00%

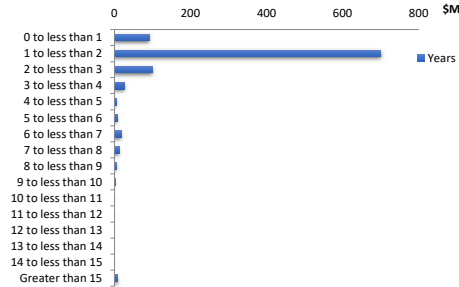


TABLE 10: REMAINING TERM

Years	Value (\$)	% by Value	Loans	% by Loans
0 to 5	4,231,970	0.43%	8	0.34%
more than 5 to 10	3,905,478	0.40%	36	1.54%
more than 10 to 15	7,014,107	0.72%	51	2.18%
more than 15 to 20	17,994,405	1.85%	76	3.24%
more than 20 to 25	83,592,090	8.59%	293	12.50%
more than 25 to 30	856,952,528	88.01%	1,880	80.20%
Greater than 30	0	0.00%	0	0.00%
Total	973,690,577	100.00%	2,344	100.00%

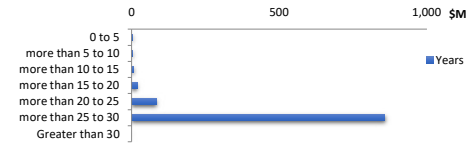


TABLE 11: ORIGINAL TERM

Years	Value (\$)	% by Value	Loans	% by Loans
0 to 5	4,054,081	0.42%	2	0.09%
more than 5 to 10	672,487	0.07%	6	0.26%
more than 10 to 15	2,020,397	0.21%	12	0.51%
more than 15 to 20	14,613,433	1.50%	61	2.60%
more than 20 to 25	43,152,160	4.43%	135	5.76%
more than 25 to 30	909,178,019	93.37%	2,128	90.78%
Greater than 30	0	0.00%	0	0.00%
Total	973,690,577	100.00%	2,344	100.00%

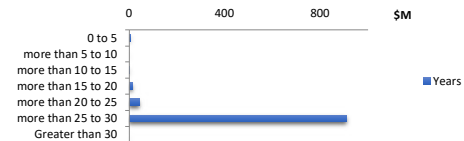


TABLE 12: LOAN TYPE

	Value (\$)	% by Value	Loans	% by Loans
Principal & Interest	923,021,128	94.80%	2,228	95.05%
Interest Only (excl. LOC)	50,669,449	5.20%	116	4.95%
Line of Credit	0	0.00%	0	0.00%
Total	973,690,577	100.00%	2,344	100.00%



TABLE 13: INTEREST ONLY REMAINING TERM

Years	Value (\$)	% by Value	Loans	% by Loans
0 to 1	10,390,661	1.07%	25	21.55%
more than 1 to 2	7,433,142	0.76%	13	11.21%
more than 2 to 3	6,719,844	0.69%	15	12.93%
more than 3 to 4	19,115,922	1.96%	54	46.55%
more than 4 to 5	7,009,880	0.72%	9	7.76%
more than 5 to 6	0	0.00%	0	0.00%
more than 6 to 7	0	0.00%	0	0.00%
more than 7 to 8	0	0.00%	0	0.00%
more than 8 to 9	0	0.00%	0	0.00%
more than 9 to 10	0	0.00%	0	0.00%
Greater than 10	0	0.00%	0	0.00%
Total	50,669,449	5.20%	116	100.00%

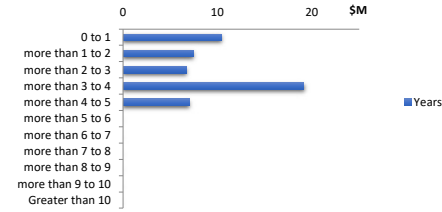


TABLE 14: REPAYMENT TYPE

	Value (\$)	% by Value	Loans	% by Loans
Variable Rate	955,001,884	98.08%	2,300	98.12%
Fixed Rate	18,688,693	1.92%	44	1.88%
Total	973,690,577	100.00%	2,344	100.00%



TABLE 15: FIXED RATE REMAINING TERM

Years	Value (\$)	% by Value	Loans	% by Loans
0 to 1	5,511,643	0.57%	16	0.68%
more than 1 to 2	408,204	0.04%	1	0.04%
more than 2 to 3	8,569,409	0.88%	18	0.77%
more than 3 to 4	4,199,438	0.43%	9	0.38%
more than 4 to 5	0	0.00%	0	0.00%
Greater than 5	0	0.00%	0	0.00%
Total	18,688,693	1.92%	44	1.88%

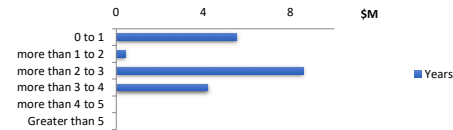


TABLE 16: BORROWER TYPE

	Value (\$)	% by Value	Loans	% by Loans
Individual	322,979,184	33.17%	675	30.43%
Company	650,711,393	66.83%	1,543	69.57%
Total	973,690,577	100.00%	2,218	100.00%



TABLE 17: OCCUPANCY TYPE

	Value (\$)	% by Value	Loans	% by Loans
Owner Occupied	212,301,399	21.80%	519	22.14%
Investment	761,389,179	78.20%	1,825	77.86%
Total	973,690,577	100.00%	2,344	100.00%



TABLE 18: PROPERTY TYPE

	Value (\$)	% by Value	Loans	% by Loans
House	540,778,668	55.54%	1,237	55.77%
Apartment	29,957,857	3.08%	76	3.43%
Townhouse	22,209,869	2.28%	66	2.98%
Commercial	196,144,613	20.14%	380	17.13%
Unit	183,606,804	18.86%	457	20.60%
Villa	497,713	0.05%	1	0.05%
Vacant Land	0	0.00%	0	0.00%
Off The Plan	495,052	0.05%	1	0.05%
Total	973,690,577	100.00%	2,218	100.00%

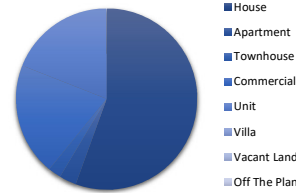


TABLE 19: INTEREST RATE DISTRIBUTION

Percentage	Value (\$)	% by Value	Loans	% by Loans
less than 4.5%	0	0.00%	0	0.00%
4.5% to less than 5%	261,927	0.03%	1	0.04%
5% to less than 5.5%	10,468	0.00%	2	0.09%
5.5% to less than 6%	81,466,503	8.37%	215	9.17%
6% to less than 6.5%	88,727,454	9.11%	188	8.02%
6.5% to less than 7%	266,265,352	27.35%	689	29.39%
7% to less than 7.5%	385,142,780	39.55%	924	39.42%
7.5% to less than 8%	121,683,412	12.50%	231	9.85%
8% to less than 8.5%	21,403,409	2.20%	49	2.09%
Greater than 8.5%	8,729,272	0.90%	45	1.92%
Total	973,690,577	100.00%	2,344	100.00%

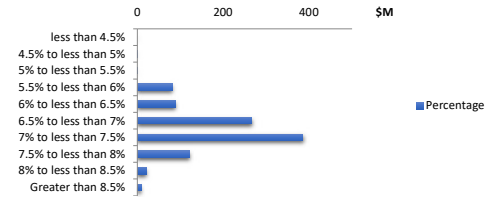


TABLE 20: TOP 10 POST CODES - by value

Postcode	Value (\$)	% by Value	Loans	% by Loans
3029	12,108,364	1.24%	30	1.28%
4209	11,181,436	1.15%	29	1.24%
3064	10,427,571	1.07%	21	0.90%
4218	10,285,515	1.06%	12	0.51%
4000	10,120,453	1.04%	16	0.68%
4740	9,302,409	0.96%	26	1.11%
4301	9,251,106	0.95%	23	0.98%
3004	8,414,119	0.86%	12	0.51%
4818	7,473,654	0.77%	19	0.81%
4350	7,441,119	0.76%	17	0.73%
Total	96,005,745	9.86%	205	8.75%

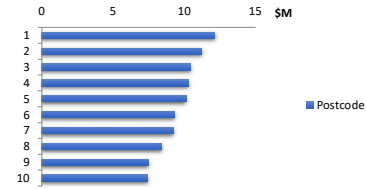


TABLE 21: Hardship

Hardship Type	Value (\$)	% by Value	Loans	% by Loans
COVID-19	-	0.00%	0	0.00%
Standard	2,560,194.21	0.26%	4	0.17%
Non-Hardship	971,130,382.96	99.74%	2,340	99.83%
Total	973,690,577	100.00%	2,344	100.00%



TABLE 22: Green Loans

Green Loans	Value (\$)	% by Value	Loans	% by Loans
Yes	-	0.00%	0	0.00%
No	973,690,577.17	100.00%	2,344	100.00%
Total	973,690,577	100.00%	2,344	100.00%

