

Triton Bond Trust 2024-3
Collateral Report
OK

Model Period	16
Collection Period Start	1-Apr-26
Collection Period End	30-Apr-26
No. of Days	30
Interest Period Start	13-Apr-26
Interest Period End	12-May-26
No. of Days	30
Determination Date	11-May-26
Payment Date	13-May-26



TABLE 1: PORTFOLIO SUMMARY

Description	Value
Pool Cut Date	30-Apr-26
Total Loan Pool Balance	851,865,204
No. of Loans (Unconsolidated)	2,634
No. of Loans (Consolidated)	2,451
Average Loan Balance (Consolidated)	347,558
Maximum Loan Balance (consolidated)	2,373,044
Weighted Average Current LVR (%)	60.92%
Maximum Current LVR (%)	96.68%
Weighted Average Interest Rate	6.88%
Weighted Average Fixed Rate	7.06%
Weighted Average Variable Rate	6.87%
Weighted Average Seasoning (years)	3.39
Weighted Average Remaining Term (years)	25.82
Maximum Remaining Term (years)	28.50
Percentage of Fixed Rate Loans (%)	2.62%
Percentage of Interest Only Loans (%)	8.75%
Percentage of Line of Credit Loans (%)	0.00%
Percentage of Low Documentation Loans (%)	0.00%

TABLE 2: CURRENT LOAN BALANCE - (Consolidated)

Value	Value (\$)	% by Value	Loans	% by Loans
<= \$100,000	7,689,718	0.90%	185	7.65%
\$100,000 > and <= \$150,000	27,755,880	3.26%	218	8.86%
\$150,000 > and <= \$200,000	56,148,191	6.59%	320	13.06%
\$200,000 > and <= \$250,000	60,347,942	7.08%	288	10.93%
\$250,000 > and <= \$300,000	74,999,812	8.80%	273	11.14%
\$300,000 > and <= \$350,000	82,789,606	9.72%	255	10.40%
\$350,000 > and <= \$400,000	62,068,960	7.30%	169	6.90%
\$400,000 > and <= \$450,000	70,237,486	8.25%	166	6.77%
\$450,000 > and <= \$500,000	58,226,901	6.84%	123	5.02%
\$500,000 > and <= \$550,000	47,187,970	5.54%	90	3.67%
\$550,000 > and <= \$600,000	49,943,411	5.85%	87	3.56%
\$600,000 > and <= \$650,000	34,863,530	4.09%	56	2.28%
\$650,000 > and <= \$700,000	28,404,670	3.33%	42	1.71%
\$700,000 > and <= \$750,000	25,245,502	2.96%	35	1.43%
\$750,000 > and <= \$800,000	21,723,477	2.55%	28	1.14%
\$800,000 > and <= \$850,000	19,012,385	2.23%	23	0.94%
\$850,000 > and <= \$900,000	13,088,586	1.54%	15	0.61%
\$900,000 > and <= \$950,000	23,129,414	2.72%	25	1.02%
\$950,000 > and <= \$1,000,000	14,637,038	1.72%	15	0.61%
> \$1,000,000	73,554,727	8.63%	58	2.37%
Total	851,865,204	100.00%	2,451	100.00%

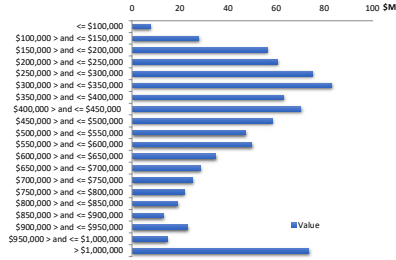


TABLE 3: CURRENT LVR - (Consolidated)

Percentage	Value (\$)	% by Value	Loans	% by Loans
<= 25%	23,164,499	2.72%	268	10.93%
25% > and <= 30%	23,117,347	2.71%	107	4.37%
30% > and <= 35%	28,243,297	3.32%	122	4.98%
35% > and <= 40%	33,919,738	3.98%	138	5.63%
40% > and <= 45%	48,240,168	5.66%	180	7.34%
45% > and <= 50%	55,510,696	6.52%	210	8.57%
50% > and <= 55%	70,569,479	8.28%	231	9.42%
55% > and <= 60%	82,738,964	9.71%	244	9.96%
60% > and <= 65%	81,868,120	9.61%	210	8.57%
65% > and <= 70%	101,884,992	11.96%	209	8.53%
70% > and <= 75%	80,872,218	9.49%	147	6.00%
75% > and <= 80%	163,006,016	19.14%	296	12.08%
80% > and <= 85%	36,370,738	4.27%	55	2.24%
85% > and <= 90%	17,422,653	2.05%	26	1.06%
90% > and <= 95%	3,651,128	0.43%	6	0.24%
95% > and <= 100%	1,295,151	0.15%	2	0.08%
100% > and <= 105%	0	0.00%	0	0.00%
> 105%	0	0.00%	0	0.00%
Total	851,865,204	100.00%	2,451	100.00%

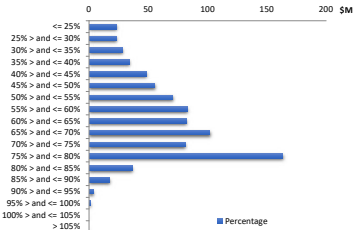


TABLE 4: GEOGRAPHIC DISTRIBUTION - by primary security property

State	Value (\$)	% by Value	Loans	% by Loans
New South Wales	235,901,184	27.89%	531	20.16%
Victoria	251,434,919	29.52%	789	29.95%
Queensland	243,606,062	28.60%	893	33.90%
Western Australia	53,441,608	6.27%	168	6.38%
South Australia	38,680,290	4.54%	134	5.09%
Tasmania	15,767,724	1.85%	98	3.34%
Australian Capital Territory	11,349,289	1.33%	27	1.03%
Northern Territory	1,684,127	0.20%	4	0.15%
Total	851,865,204	100.00%	2,634	100.00%

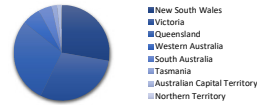


TABLE 5: METRO VS. NON-METRO DISTRIBUTION - by primary security property

Location	Value (\$)	% by Value	Loans	% by Loans
Metro	745,328,377	87.49%	2,247	85.31%
Non Metro	77,923,919	9.15%	298	11.31%
Inner City	28,612,908	3.36%	89	3.38%
Total	851,865,204	100.00%	2,634	100.00%

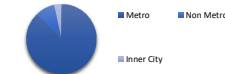


TABLE 6: DOCUMENTATION TYPE

Documentation	Value (\$)	% by Value	Loans	% by Loans
Full Doc	851,865,203.80	100.00%	2,634	100.00%
No Doc	0.00	0.00%	0	0.00%
Alt Doc	0.00	0.00%	0	0.00%
Low Doc	0.00	0.00%	0	0.00%
Total	851,865,204	100.00%	2,634	100.00%



TABLE 7: MORTGAGE INSURER

LMI Provider	Value (\$)	% by Value	Loans	% by Loans
QBE	990,365	0.12%	3	0.11%
ARCH	57,534,314	6.75%	103	3.91%
Helia	37,120,033	4.36%	123	4.67%
No Data	756,220,491	88.77%	2,405	91.31%
Total	851,865,204	100.00%	2,634	100.00%



TABLE 8: ARREARS

Days	Value (\$)	% by Value	Loans	% by Loans
Current	817,469,143	95.96%	2,563	97.30%
1-30 days	31,924,745	3.75%	64	2.43%
31-60 days	1,053,000	0.12%	3	0.11%
61-90 days	1,389,370	0.16%	3	0.11%
91-120 days	0	0.00%	0	0.00%
121-150 days	0	0.00%	0	0.00%
151-180 days	0	0.00%	0	0.00%
181 days or more	29,946	0.00%	1	0.04%
Total	851,865,204	100.00%	2,634	100.00%

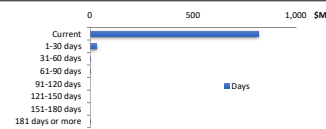


TABLE 9: SEASONING

Years	Value (\$)	% by Value	Loans	% by Loans
0 to less than 1	0	0.00%	0	0.00%
1 to less than 2	230,500,274	27.06%	549	20.84%
2 to less than 3	325,578,103	38.22%	966	36.67%
3 to less than 4	91,440,034	10.74%	238	9.04%
4 to less than 5	21,899,887	2.57%	58	2.20%
5 to less than 6	17,378,929	2.04%	60	2.28%
6 to less than 7	71,810,025	8.43%	327	12.41%
7 to less than 8	75,386,446	8.85%	355	13.48%
8 to less than 9	14,534,221	1.74%	67	2.54%
9 to less than 10	1,358,631	0.16%	6	0.23%
10 to less than 11	0	0.00%	0	0.00%
11 to less than 12	167,869	0.02%	2	0.08%
12 to less than 13	0	0.00%	0	0.00%
13 to less than 14	0	0.00%	0	0.00%
14 to less than 15	0	0.00%	0	0.00%
Greater than 15	1,502,785	0.18%	6	0.23%
Total	851,865,204	100.00%	2,634	100.00%

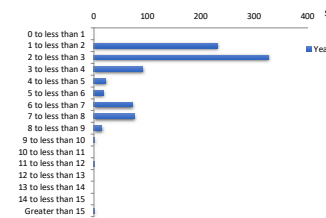


TABLE 10: REMAINING TERM

Years	Value (\$)	% by Value	Loans	% by Loans
0 to 5	0	0.00%	0	0.00%
more than 5 to 10	0	0.00%	0	0.00%
more than 10 to 15	0	0.00%	0	0.00%
more than 15 to 20	0	0.00%	0	0.00%
more than 20 to 25	0	0.00%	0	0.00%
more than 25 to 30	0	0.00%	0	0.00%
Greater than 30	851,865,204	100.00%	2,634	100.00%
Total	851,865,204	100.00%	2,634	100.00%



TABLE 11: ORIGINAL TERM

Years	Value (\$)	% by Value	Loans	% by Loans
0 to 5	0	0.00%	0	0.00%
more than 5 to 10	62,487	0.01%	1	0.04%
more than 10 to 15	1,961,812	0.23%	13	0.49%
more than 15 to 20	13,970,298	1.64%	71	2.70%
more than 20 to 25	66,983,214	7.86%	273	10.36%
more than 25 to 30	788,887,394	90.26%	2,276	86.41%
Greater than 30	0	0.00%	0	0.00%
Total	851,865,204	100.00%	2,634	100.00%

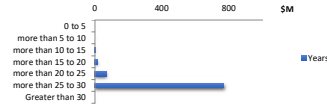


TABLE 12: LOAN TYPE

	Value (\$)	% by Value	Loans	% by Loans
Principal & Interest	777,337,278	91.25%	2,434	92.41%
Interest Only (excl. LOC)	74,527,926	8.75%	200	7.59%
Line of Credit	0	0.00%	0	0.00%
Total	851,865,204	100.00%	2,634	100.00%



TABLE 13: INTEREST ONLY REMAINING TERM

Years	Value (\$)	% by Value	Loans	% by Loans
0 to 1	16,657,033	1.96%	50	25.00%
more than 1 to 2	17,301,215	2.03%	46	23.00%
more than 2 to 3	18,587,447	2.18%	41	20.50%
more than 3 to 4	21,891,617	2.57%	59	29.50%
more than 4 to 5	90,614	0.01%	4	2.00%
more than 5 to 6	0	0.00%	0	0.00%
more than 6 to 7	0	0.00%	0	0.00%
more than 7 to 8	0	0.00%	0	0.00%
more than 8 to 9	0	0.00%	0	0.00%
more than 9 to 10	0	0.00%	0	0.00%
Greater than 10	0	0.00%	0	0.00%
Total	74,527,926	8.75%	200	100.00%

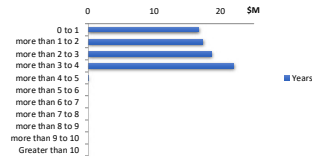


TABLE 14: REPAYMENT TYPE

Rate Type	Balance	% Balance	Loan Count	% Loan Count
Variable Rate	829,524,448	97.35%	2,583	98.06%
Fixed Rate	22,340,756	2.62%	51	1.94%
Total	851,865,204	100.00%	2,634	100.00%



TABLE 15: FIXED RATE REMAINING TERM

Years	Value (\$)	% by Value	Loans	% by Loans
0 to 1	2,199,098	0.28%	8	0.30%
more than 1 to 2	614,220	0.07%	2	0.08%
more than 2 to 3	15,877,904	1.86%	34	1.29%
more than 3 to 4	3,649,536	0.43%	7	0.27%
more than 4 to 5	0	0.00%	0	0.00%
Greater than 5	0	0.00%	0	0.00%
Total	22,340,756	2.62%	51	1.94%

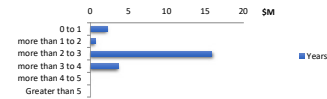


TABLE 16: BORROWER TYPE

	Value (\$)	% by Value	Loans	% by Loans
Individual	388,677,346	45.63%	749	30.56%
Company	463,187,858	54.37%	1,702	69.44%
Total	851,865,204	100.00%	2,451	100.00%



TABLE 17: OCCUPANCY TYPE

	Value (\$)	% by Value	Loans	% by Loans
Owner Occupied	251,685,221	29.55%	545	20.69%
Investment	600,179,983	70.45%	2,089	79.31%
Total	851,865,204	100.00%	2,634	100.00%



TABLE 18: PROPERTY TYPE

	Value (\$)	% by Value	Loans	% by Loans
House	545,261,474	64.01%	1,352	55.16%
Apartment	54,218,563	6.36%	167	6.81%
Townhouse	61,955,165	7.27%	257	10.49%
Unit	189,732,599	22.27%	669	27.29%
Villa	697,402	0.08%	6	0.24%
Vacant Land	0	0.00%	0	0.00%
Rural Residential	0	0.00%	0	0.00%
Total	851,865,204	100.00%	2,451	100.00%

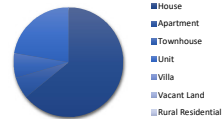


TABLE 19: INTEREST RATE DISTRIBUTION

Percentage	Value (\$)	% by Value	Loans	% by Loans
less than 4.5%	300,327	0.04%	1	0.04%
4.5% to less than 5%	146,335	0.02%	1	0.04%
5% to less than 5.5%	1,020,136	0.12%	2	0.08%
5.5% to less than 6%	51,575,470	6.05%	135	5.13%
6% to less than 6.5%	131,596,936	15.45%	313	11.88%
6.5% to less than 7%	378,350,345	44.41%	1,196	45.41%
7% to less than 7.5%	224,051,501	26.30%	715	27.15%
7.5% to less than 8%	38,511,596	4.52%	128	4.86%
8% to less than 8.5%	3,881,607	0.46%	20	0.76%
Greater than 8.5%	22,430,951	2.63%	123	4.67%
Total	851,865,204	100.00%	2,634	100.00%

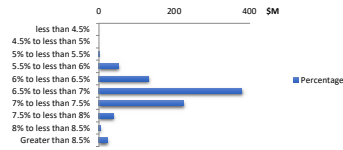


TABLE 20: TOP 10 POST CODES - by value

Postcode	Value (\$)	% by Value	Loans	% by Loans
Postcode	Balance	% Balance	Loan Count	% Loan Count
3029	20,006,647	2.35%	51	1.94%
2765	13,756,070	1.61%	17	0.65%
4207	12,196,495	1.43%	55	2.09%
4503	11,343,127	1.33%	55	2.09%
2154	9,724,483	1.14%	14	0.53%
3064	9,170,975	1.08%	29	1.10%
3000	7,812,945	0.92%	24	0.91%
4301	7,769,641	0.91%	32	1.21%
4300	7,436,857	0.87%	29	1.10%
3338	7,212,596	0.85%	20	0.76%
Total	106,429,837	12.49%	326	12.38%

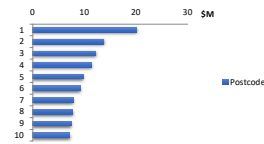


TABLE 21: Hardship

Hardship Type	Value (\$)	% by Value	Loans	% by Loans
COVID-19	-	0.00%	0	0.00%
Standard	1,155,924.49	0.14%	2	0.08%
Non-Hardship	850,709,279.31	99.86%	2,632	99.92%
Total	851,865,204	100.00%	2,634	100.00%



TABLE 22: Green Loans

Green Loans	Value (\$)	% by Value	Loans	% by Loans
Yes	844,548,493.64	99.14%	2600	98.71%
No	7,316,710.16	0.86%	34	1.29%
Total	851,865,204	100.00%	2,634	100.00%

