

Triton Bond Trust 2024-2

Collateral Report
OK

Model Period	19
Collection Period Start	1-Jan-26
Collection Period End	31-Jan-26
No. of Days	31
Interest Period Start	19-Jan-26
Interest Period End	16-Feb-26
No. of Days	29
Determination Date	13-Feb-26
Payment Date	17-Feb-26

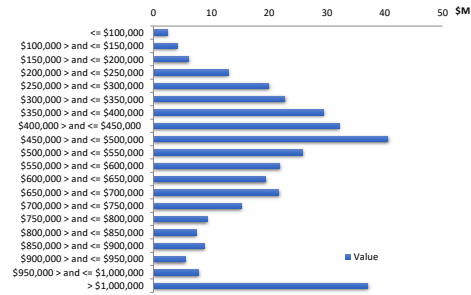


TABLE 1: PORTFOLIO SUMMARY

Description	Value
Pool Cut Date	31-Jan-26
Total Loan Pool Balance	349,966,311
No. of Loans (Unconsolidated)	1,008
No. of Loans (Consolidated)	863
Average Loan Balance (Consolidated)	405,523
Maximum Loan Balance (consolidated)	2,498,410
Weighted Average Current LVR (%)	61.79%
Maximum Current LVR (%)	91.93%
Weighted Average Interest Rate	6.21%
Weighted Average Fixed Rate	7.18%
Weighted Average Variable Rate	6.19%
Weighted Average Seasoning (years)	3.49
Weighted Average Remaining Term (years)	25.98
Maximum Remaining Term (years)	28.25
Percentage of Fixed Rate Loans (%)	1.80%
Percentage of Interest Only Loans (%)	19.54%
Percentage of Line of Credit Loans (%)	0.00%
Percentage of Low Documentation Loans (%)	0.00%

TABLE 2: CURRENT LOAN BALANCE - (Consolidated)

Value	Value (\$)	% by Value	Loans	% by Loans
<= \$100,000	2,437,039	0.70%	116	13.44%
\$100,000 > and <= \$150,000	4,059,927	1.16%	32	3.71%
\$150,000 > and <= \$200,000	6,093,952	1.74%	35	4.06%
\$200,000 > and <= \$250,000	12,922,841	3.69%	57	6.60%
\$250,000 > and <= \$300,000	19,934,659	5.70%	72	8.34%
\$300,000 > and <= \$350,000	22,748,799	6.50%	69	8.00%
\$350,000 > and <= \$400,000	29,445,418	8.41%	78	9.04%
\$400,000 > and <= \$450,000	32,102,401	9.17%	76	8.81%
\$450,000 > and <= \$500,000	40,480,240	11.57%	85	9.85%
\$500,000 > and <= \$550,000	25,833,260	7.38%	49	5.68%
\$550,000 > and <= \$600,000	21,827,537	6.24%	38	4.40%
\$600,000 > and <= \$650,000	19,400,336	5.54%	31	3.59%
\$650,000 > and <= \$700,000	21,688,335	6.20%	32	3.71%
\$700,000 > and <= \$750,000	15,160,181	4.33%	21	2.43%
\$750,000 > and <= \$800,000	9,258,402	2.65%	12	1.39%
\$800,000 > and <= \$850,000	7,389,757	2.11%	9	1.04%
\$850,000 > and <= \$900,000	8,796,424	2.51%	10	1.16%
\$900,000 > and <= \$950,000	5,527,491	1.58%	6	0.70%
\$950,000 > and <= \$1,000,000	7,820,911	2.23%	8	0.93%
> \$1,000,000	37,038,402	10.58%	27	3.13%
Total	349,966,311	100.00%	863	100.00%

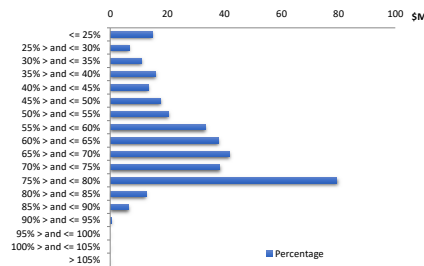


OK

OK

TABLE 3: CURRENT LVR - (Consolidated)

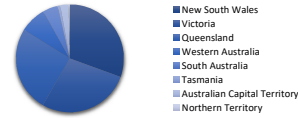
Percentage	Value (\$)	% by Value	Loans	% by Loans
<= 25%	14,779,415	4.22%	172	19.93%
25% > and <= 30%	6,626,489	1.89%	21	2.43%
30% > and <= 35%	11,035,016	3.15%	35	4.06%
35% > and <= 40%	15,915,589	4.55%	43	4.98%
40% > and <= 45%	13,380,184	3.82%	34	3.94%
45% > and <= 50%	17,690,246	5.05%	45	5.21%
50% > and <= 55%	20,391,366	5.83%	48	5.56%
55% > and <= 60%	33,312,497	9.52%	64	7.42%
60% > and <= 65%	37,850,658	10.82%	75	8.69%
65% > and <= 70%	41,695,028	11.91%	81	9.39%
70% > and <= 75%	38,424,924	10.98%	68	7.88%
75% > and <= 80%	79,413,805	22.69%	136	15.76%
80% > and <= 85%	12,477,526	3.57%	28	3.24%
85% > and <= 90%	6,477,662	1.85%	12	1.39%
90% > and <= 95%	495,905	0.14%	1	0.12%
95% > and <= 100%	0	0.00%	0	0.00%
100% > and <= 105%	0	0.00%	0	0.00%
> 105%	0	0.00%	0	0.00%
Total	349,966,311	100.00%	863	100.00%



OK OK

TABLE 4: GEOGRAPHIC DISTRIBUTION - by primary security property

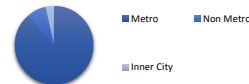
State	Value (\$)	% by Value	Loans	% by Loans
New South Wales	107,219,964	30.64%	242	24.01%
Victoria	97,055,038	27.73%	270	26.79%
Queensland	89,357,035	25.53%	287	28.47%
Western Australia	27,533,135	7.87%	102	10.12%
South Australia	15,821,023	4.52%	63	6.25%
Tasmania	2,831,439	0.81%	9	0.89%
Australian Capital Territory	8,760,256	2.50%	31	3.08%
Northern Territory	1,388,421	0.40%	4	0.40%
Total	349,966,311	100.00%	1,008	100.00%



OK OK

TABLE 5: METRO VS. NON-METRO DISTRIBUTION - by primary security property

Location	Value (\$)	% by Value	Loans	% by Loans
Metro	310,444,246	88.71%	878	87.10%
Non Metro	27,261,573	7.79%	94	9.33%
Inner City	12,260,492	3.50%	36	3.57%
Total	349,966,311	100.00%	1,008	100.00%



OK OK

TABLE 6: DOCUMENTATION TYPE

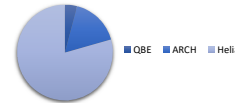
Documentation	Value (\$)	% by Value	Loans	% by Loans
Full Doc	349,966,311.17	100.00%	1,008	100.00%
No Doc	0.00	0.00%	0	0.00%
Alt Doc	0.00	0.00%	0	0.00%
Low Doc	0.00	0.00%	0	0.00%
Total	349,966,311	100.00%	1,008	100.00%



OK OK

TABLE 7: MORTGAGE INSURER

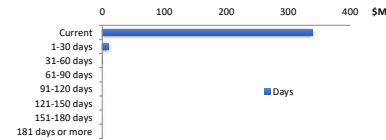
LMI Provider	Value (\$)	% by Value	Loans	% by Loans
QBE	1,474,132	0.42%	8	0.79%
ARCH	5,945,744	1.70%	15	1.49%
Helia	28,528,334	8.15%	105	10.42%
No Data	314,018,102	89.73%	880	87.30%
Total	349,966,311	100.00%	1,008	100.00%



OK OK

TABLE 8: ARREARS

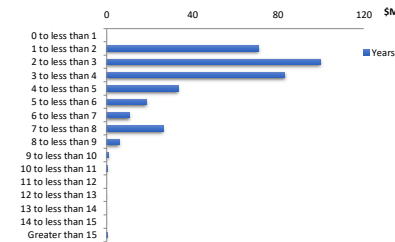
Days	Value (\$)	% by Value	Loans	% by Loans
Current	338,493,957	96.72%	984	97.62%
1-30 days	10,909,500	3.12%	23	2.28%
31-60 days	562,854	0.16%	1	0.10%
61-90 days	0	0.00%	0	0.00%
91-120 days	0	0.00%	0	0.00%
121-150 days	0	0.00%	0	0.00%
151-180 days	0	0.00%	0	0.00%
181 days or more	0	0.00%	0	0.00%
Total	349,966,311	100.00%	1,008	100.00%



OK OK

TABLE 9: SEASONING

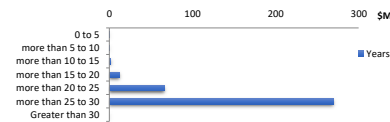
Years	Value (\$)	% by Value	Loans	% by Loans
0 to less than 1	0	0.00%	0	0.00%
1 to less than 2	70,914,940	20.26%	167	16.57%
2 to less than 3	99,642,869	28.47%	257	25.50%
3 to less than 4	83,197,070	23.77%	224	22.22%
4 to less than 5	33,230,730	9.50%	104	10.32%
5 to less than 6	18,601,322	5.32%	58	5.75%
6 to less than 7	10,645,727	3.04%	40	3.97%
7 to less than 8	26,252,630	7.50%	99	9.82%
8 to less than 9	5,843,360	1.67%	44	4.37%
9 to less than 10	857,858	0.25%	11	1.09%
10 to less than 11	421,982	0.12%	2	0.20%
11 to less than 12	0	0.00%	0	0.00%
12 to less than 13	0	0.00%	0	0.00%
13 to less than 14	0	0.00%	0	0.00%
14 to less than 15	0	0.00%	0	0.00%
Greater than 15	357,823	0.10%	2	0.20%
Total	349,966,311	100.00%	1,008	100.00%



OK OK

TABLE 10: REMAINING TERM

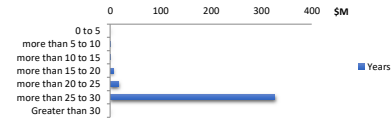
Years	Value (\$)	% by Value	Loans	% by Loans
0 to 5	39,875	0.01%	1	0.10%
more than 5 to 10	408,894	0.12%	4	0.40%
more than 10 to 15	1,900,147	0.54%	15	1.49%
more than 15 to 20	12,108,639	3.46%	48	4.76%
more than 20 to 25	66,009,213	18.86%	250	24.80%
more than 25 to 30	269,499,542	77.01%	690	68.45%
Greater than 30	0	0.00%	0	0.00%
Total	349,966,311	100.00%	1,008	100.00%



OK OK

TABLE 11: ORIGINAL TERM

Years	Value (\$)	% by Value	Loans	% by Loans
0 to 5	0	0.00%	0	0.00%
more than 5 to 10	213,771	0.06%	2	0.20%
more than 10 to 15	714,751	0.20%	5	0.50%
more than 15 to 20	5,756,910	1.64%	29	2.88%
more than 20 to 25	17,025,145	4.86%	52	5.16%
more than 25 to 30	326,255,734	93.22%	920	91.27%
Greater than 30	0	0.00%	0	0.00%
Total	349,966,311	100.00%	1,008	100.00%



OK OK

TABLE 12: LOAN TYPE

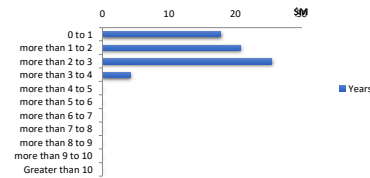
	Value (\$)	% by Value	Loans	% by Loans
Principal & Interest	281,585,367	80.46%	853	84.62%
Interest Only (excl. LOC)	68,380,944	19.54%	155	15.38%
Line of Credit	0	0.00%	0	0.00%
Total	349,966,311	100.00%	1,008	100.00%



OK OK

TABLE 13: INTEREST ONLY REMAINING TERM

Years	Value (\$)	% by Value	Loans	% by Loans
0 to 1	17,834,141	5.10%	44	28.39%
more than 1 to 2	20,817,128	5.95%	56	36.13%
more than 2 to 3	25,484,820	7.28%	45	29.03%
more than 3 to 4	4,244,855	1.21%	10	6.45%
more than 4 to 5	0	0.00%	0	0.00%
more than 5 to 6	0	0.00%	0	0.00%
more than 6 to 7	0	0.00%	0	0.00%
more than 7 to 8	0	0.00%	0	0.00%
more than 8 to 9	0	0.00%	0	0.00%
more than 9 to 10	0	0.00%	0	0.00%
Greater than 10	0	0.00%	0	0.00%
Total	68,380,944	19.54%	155	100.00%



OK OK

TABLE 14: REPAYMENT TYPE

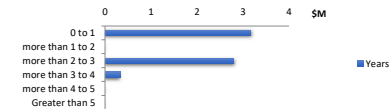
Rate Type	Balance	% Balance	Loan Count	% Loan Count
Variable Rate	343,665,246	98.20%	995	98.71%
Fixed Rate	6,301,065	1.80%	13	1.29%
Total	349,966,311	100.00%	1,008	100.00%



OK OK

TABLE 15: FIXED RATE REMAINING TERM

Years	Value (\$)	% by Value	Loans	% by Loans
0 to 1	3,175,270	0.91%	4	0.40%
more than 1 to 2	0	0.00%	0	0.00%
more than 2 to 3	2,799,969	0.80%	8	0.79%
more than 3 to 4	325,826	0.09%	1	0.10%
more than 4 to 5	0	0.00%	0	0.00%
Greater than 5	0	0.00%	0	0.00%
Total	6,301,065	1.80%	13	1.29%



OK OK

TABLE 16: BORROWER TYPE

	Value (\$)	% by Value	Loans	% by Loans
Individual	307,056,729	87.74%	802	92.93%
Company	42,909,582	12.26%	61	7.07%
Total	349,966,311	100.00%	863	100.00%



OK OK

TABLE 17: OCCUPANCY TYPE

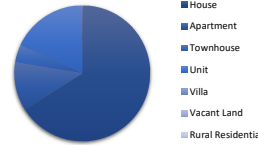
	Value (\$)	% by Value	Loans	% by Loans
Owner Occupied	161,369,233	46.11%	541	53.67%
Investment	188,597,079	53.89%	467	46.33%
Total	349,966,311	100.00%	1,008	100.00%



OK OK

TABLE 18: PROPERTY TYPE

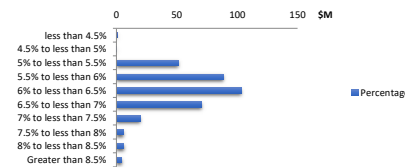
	Value (\$)	% by Value	Loans	% by Loans
House	231,201,546	66.06%	568	65.82%
Apartment	40,609,530	11.60%	87	10.08%
Townhouse	14,419,690	4.12%	30	3.48%
Unit	63,420,598	18.12%	177	20.51%
Villa	314,947	0.09%	1	0.12%
Vacant Land	0	0.00%	0	0.00%
Rural Residential	0	0.00%	0	0.00%
Total	349,966,311	100.00%	863	100.00%



OK OK

TABLE 19: INTEREST RATE DISTRIBUTION

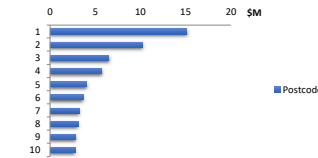
Percentage	Value (\$)	% by Value	Loans	% by Loans
less than 4.5%	585,961	0.17%	2	0.20%
4.5% to less than 5%	132,203	0.04%	1	0.10%
5% to less than 5.5%	51,147,855	14.62%	195	19.35%
5.5% to less than 6%	88,423,783	25.27%	276	27.38%
6% to less than 6.5%	103,209,628	29.49%	271	26.88%
6.5% to less than 7%	70,424,965	20.12%	156	15.48%
7% to less than 7.5%	19,547,135	5.59%	71	7.04%
7.5% to less than 8%	5,758,439	1.65%	14	1.39%
8% to less than 8.5%	6,275,590	1.79%	11	1.09%
Greater than 8.5%	4,460,754	1.27%	11	1.09%
Total	349,966,311	100.00%	1,008	100.00%



OK OK

TABLE 20: TOP 10 POST CODES - by value

Postcode	Value (\$)	% by Value	Loans	% by Loans
2154	15,061,358	4.30%	24	2.38%
3029	10,176,044	2.91%	25	2.48%
2074	6,522,203	1.86%	5	0.50%
2072	5,742,481	1.64%	11	1.09%
3006	4,068,692	1.16%	10	0.99%
3064	3,659,715	1.05%	8	0.79%
2316	3,228,464	0.92%	3	0.30%
4217	3,103,850	0.89%	8	0.79%
2570	2,870,286	0.82%	3	0.30%
4213	2,765,694	0.79%	3	0.30%
Total	57,198,786	16.34%	100	9.92%



OK

TABLE 21: Hardship

Hardship Type	Value (\$)	% by Value	Loans	% by Loans
COVID-19	-	0.00%	0	0.00%
Standard	2,129,116.45	0.61%	4	0.40%
Non-Hardship	347,837,194.72	99.39%	1,004	99.60%
Total	349,966,311	100.00%	1,008	100.00%



OK OK

TABLE 22: Green Loans

Green Loans	Value (\$)	% by Value	Loans	% by Loans
Yes	47,500,012.76	13.57%	123	12.20%
No	302,466,298.41	86.43%	885	87.80%
Total	349,966,311	100.00%	1,008	100.00%



OK OK